

Sanborn Sample

350 5th Ave.

New York, NY 10001

Inquiry Number: 7932022.1

March 20, 2025

## Certified Sanborn® Map Report



6 Armstrong Road, 4th floor  
Shelton, CT 06484  
Toll Free: 800.352.0050  
[www.edrnet.com](http://www.edrnet.com)

# Certified Sanborn® Map Report

03/20/25

**Site Name:**

Sanborn Sample  
350 5th Ave.  
New York, NY 10001  
EDR Inquiry # 7932022.1

**Client Name:**

Environmental Data Resources  
3530 Post Road  
Southport, CT 06890  
Contact: Calvin McDonald



The Sanborn Library has been searched by EDR and maps covering the target property location as provided by Environmental Data Resources were identified for the years listed below. The Sanborn Library is the largest, most complete collection of fire insurance maps. The collection includes maps from Sanborn, Bromley, Perris & Browne, Hopkins, Barlow, and others. Only Environmental Data Resources Inc. (EDR) is authorized to grant rights for commercial reproduction of maps by the Sanborn Library LLC, the copyright holder for the collection. Results can be authenticated by visiting [www.edrnet.com/sanborn](http://www.edrnet.com/sanborn).

The Sanborn Library is continually enhanced with newly identified map archives. This report accesses all maps in the collection as of the day this report was generated.

**Certified Sanborn Results:**

**Certification #** CFCC-4BC2-8E79

**PO #** NA

**Project** LightBox

**Maps Provided:**

2005	1993	1968
2004	1992	1950
2003	1991	1929
2002	1988	1910
2001	1987	1899
1996	1985	1890
1995	1983	
1994	1980	



Sanborn® Library search results

Certification #: CFCC-4BC2-8E79

The Sanborn Library includes more than 1.2 million fire insurance maps from Sanborn, Bromley, Perris & Browne, Hopkins, Barlow and others which track historical property usage in approximately 12,000 American cities and towns. Collections searched:

- ☒ Library of Congress
- ☒ University Publications of America
- ☒ EDR Private Collection

*The Sanborn Library LLC Since 1866™*

**Limited Permission To Make Copies**

Environmental Data Resources (the client) is permitted to make up to FIVE photocopies of this Sanborn Map transmittal and each fire insurance map accompanying this report solely for the limited use of its customer. No one other than the client is authorized to make copies. Upon request made directly to an EDR Account Executive, the client may be permitted to make a limited number of additional photocopies. This permission is conditioned upon compliance by the client, its customer and their agents with EDR's copyright policy; a copy of which is available upon request.

**Disclaimer - Copyright and Trademark Notice**

This Report contains certain information obtained from a variety of public and other sources reasonably available to Environmental Data Resources, LLC. It cannot be concluded from this Report that coverage information for the target and surrounding properties does not exist from other sources. This Report is provided on an "AS IS", "AS AVAILABLE" basis. NO WARRANTY EXPRESS OR IMPLIED IS MADE WHATSOEVER IN CONNECTION WITH THIS REPORT.

ENVIRONMENTAL DATA RESOURCES, LLC AND ITS SUBSIDIARIES, AFFILIATES AND THIRD PARTY SUPPLIERS DISCLAIM ALL WARRANTIES, OF ANY KIND OR NATURE, EXPRESS OR IMPLIED, ARISING OUT OF OR RELATED TO THIS REPORT OR ANY OF THE DATA AND INFORMATION PROVIDED IN THIS REPORT, INCLUDING WITHOUT LIMITATION, ANY WARRANTIES REGARDING ACCURACY, QUALITY, CORRECTNESS, COMPLETENESS, COMPREHENSIVENESS, SUITABILITY, MERCHANTABILITY, FITNESS FOR A PARTICULAR PURPOSE, TITLE, NON-INFRINGEMENT, MISAPPROPRIATION, OR OTHERWISE. ALL RISK IS ASSUMED BY THE USER. IN NO EVENT SHALL ENVIRONMENTAL DATA RESOURCES, LLC OR ITS SUBSIDIARIES, AFFILIATES OR THIRD PARTY SUPPLIERS BE LIABLE TO ANYONE FOR ANY DIRECT, INCIDENTAL, INDIRECT, SPECIAL, CONSEQUENTIAL OR OTHER DAMAGES OF ANY TYPE OR KIND (INCLUDING BUT NOT LIMITED TO LOSS OF PROFITS, LOSS OF USE, OR LOSS OF DATA), ARISING OUT OF OR IN ANY WAY CONNECTED WITH THIS REPORT OR ANY OF THE DATA AND INFORMATION PROVIDED IN THIS REPORT. Any analyses, estimates, ratings, environmental risk levels, or risk codes provided in this Report are provided for illustrative purposes only, and are not intended to provide, nor should they be interpreted as providing any facts regarding, or prediction or forecast of, any environmental risk for any property. Only an assessment performed by a qualified environmental professional can provide findings, opinions or conclusions regarding the environmental risk or conditions in, on or at any property.

Copyright 2025 by Environmental Data Resources, Inc. All rights reserved. Reproduction in any media or format, in whole or in part, of any report or map of Environmental Data Resources, Inc., or its affiliates, is prohibited without prior written permission.

EDR and its logos (including Sanborn and Sanborn Map) are trademarks of Environmental Data Resources, LLC or its affiliates. All other trademarks used herein are the property of their respective owners.



## Sanborn Sheet Key

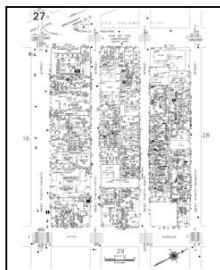
This Certified Sanborn Map Report is based upon the following Sanborn Fire Insurance map sheets.



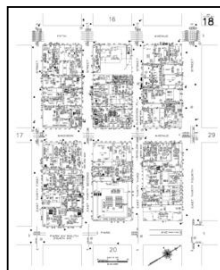
### 2005 Source Sheets



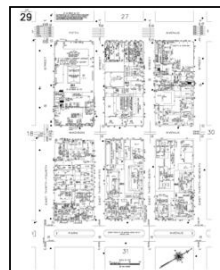
Volume 4, Sheet 16  
2005-2006



Volume 4, Sheet 27  
2005-2006

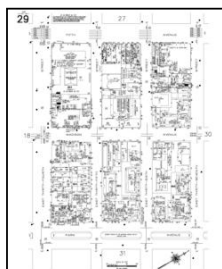


Volume 4, Sheet 18  
2005-2006

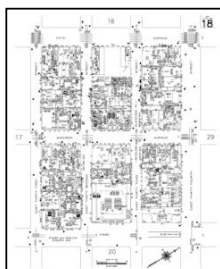


Volume 4, Sheet 29  
2005-2006

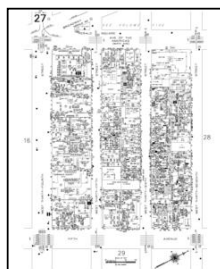
### 2004 Source Sheets



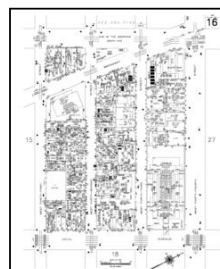
Volume 4, Sheet 29  
2004



Volume 4, Sheet 18  
2004



Volume 4, Sheet 27  
2004

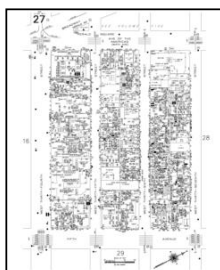


Volume 4, Sheet 16  
2004

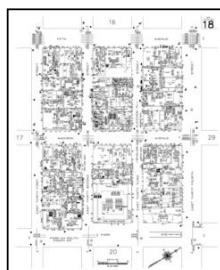
### 2003 Source Sheets



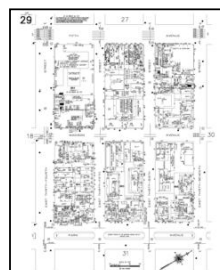
Volume 4, Sheet 16  
2003



Volume 4, Sheet 27  
2003



Volume 4, Sheet 18  
2003

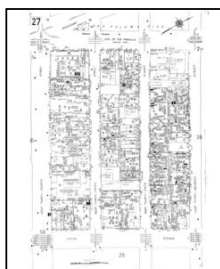


Volume 4, Sheet 29  
2003

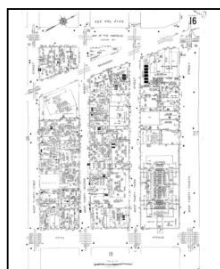
### 2002 Source Sheets



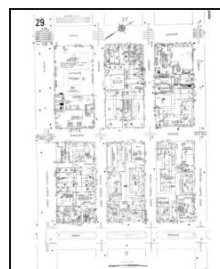
Volume 4, Sheet 18  
2002



Volume 4, Sheet 27  
2002



Volume 4, Sheet 16  
2002



Volume 4, Sheet 29  
2002

## Sanborn Sheet Key

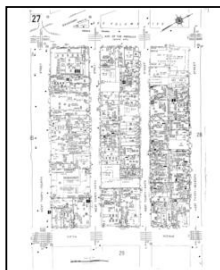
This Certified Sanborn Map Report is based upon the following Sanborn Fire Insurance map sheets.



### 2001 Source Sheets



Volume 4, Sheet 16  
2001



Volume 4, Sheet 27  
2001



Volume 4, Sheet 18  
2001

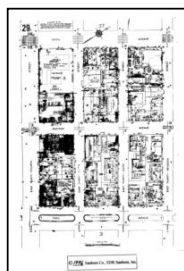


Volume 4, Sheet 29  
2001

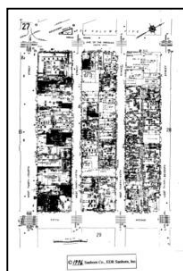
### 1996 Source Sheets



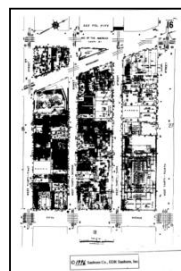
Volume 4, Sheet 18  
1996



Volume 4, Sheet 29  
1996



Volume 4, Sheet 27  
1996

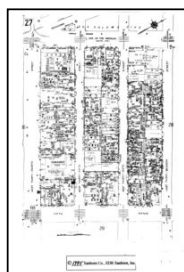


Volume 4, Sheet 16  
1996

### 1995 Source Sheets



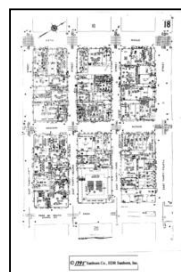
Volume 4, Sheet 16  
1995



Volume 4, Sheet 27  
1995

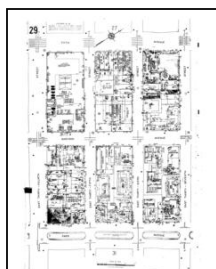


Volume 4, Sheet 29  
1995

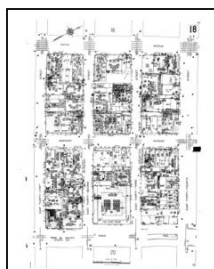


Volume 4, Sheet 18  
1995

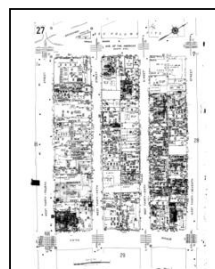
### 1994 Source Sheets



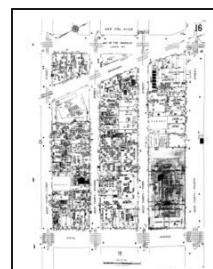
Volume 4, Sheet 29  
1994



Volume 4, Sheet 18  
1994



Volume 4, Sheet 27  
1994



Volume 4, Sheet 16  
1994

## Sanborn Sheet Key

This Certified Sanborn Map Report is based upon the following Sanborn Fire Insurance map sheets.



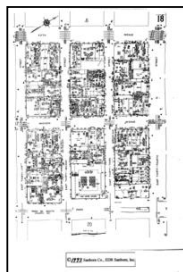
### 1993 Source Sheets



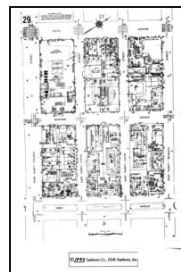
Volume 4, Sheet 16  
1993



Volume 4, Sheet 27  
1993

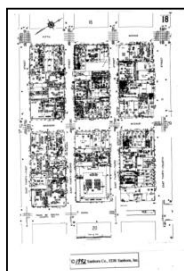


Volume 4, Sheet 18  
1993



Volume 4, Sheet 29  
1993

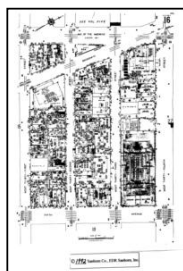
### 1992 Source Sheets



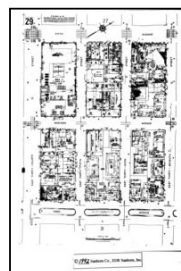
Volume 4, Sheet 18  
1992



Volume 4, Sheet 27  
1992

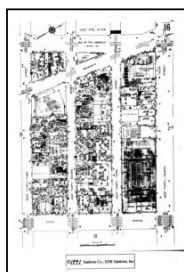


Volume 4, Sheet 16  
1992

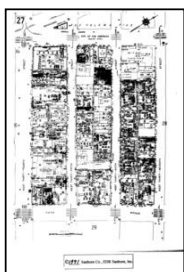


Volume 4, Sheet 29  
1992

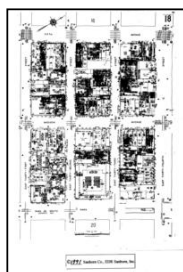
### 1991 Source Sheets



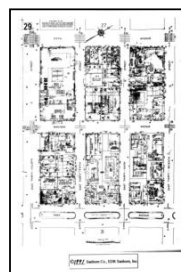
Volume 4, Sheet 16  
1991



Volume 4, Sheet 27  
1991



Volume 4, Sheet 18  
1991

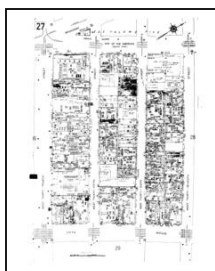


Volume 4, Sheet 29  
1991

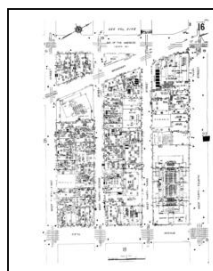
### 1988 Source Sheets



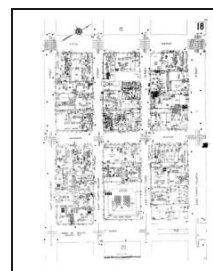
Volume 4, Sheet 29  
1988



Volume 4, Sheet 27  
1988



Volume 4, Sheet 16  
1988



Volume 4, Sheet 18  
1988



## Sanborn Sheet Key

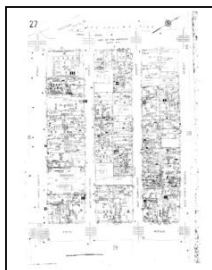
This Certified Sanborn Map Report is based upon the following Sanborn Fire Insurance map sheets.



### 1987 Source Sheets



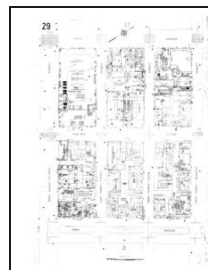
Volume 4, Sheet 16  
1987



Volume 4, Sheet 27  
1987



Volume 4, Sheet 18  
1987



Volume 4, Sheet 29  
1987

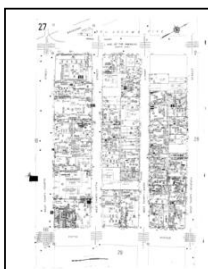
### 1985 Source Sheets



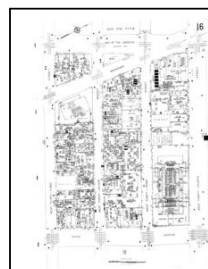
Volume 4, Sheet 18  
1985



Volume 4, Sheet 29  
1985



Volume 4, Sheet 27  
1985



Volume 4, Sheet 16  
1985

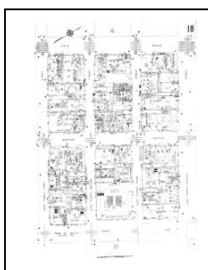
### 1983 Source Sheets



Volume 4, Sheet 16  
1983



Volume 4, Sheet 27  
1983

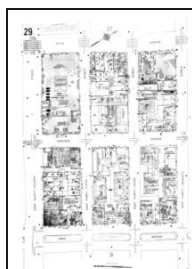


Volume 4, Sheet 18  
1983

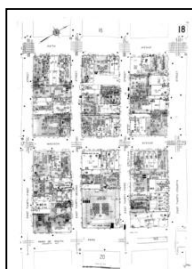


Volume 4, Sheet 29  
1983

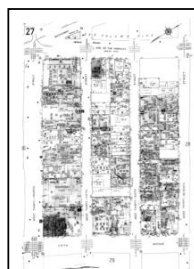
### 1980 Source Sheets



Volume 4, Sheet 29  
1980



Volume 4, Sheet 18  
1980



Volume 4, Sheet 27  
1980



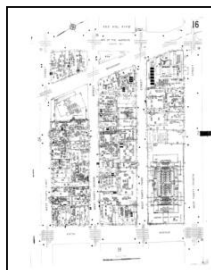
Volume 4, Sheet 16  
1980

## Sanborn Sheet Key

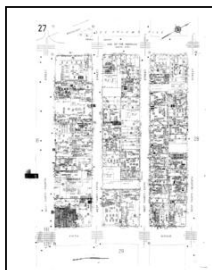
This Certified Sanborn Map Report is based upon the following Sanborn Fire Insurance map sheets.



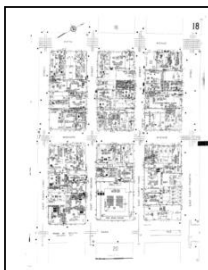
### 1968 Source Sheets



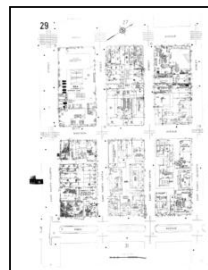
Volume 4, Sheet 16  
1968



Volume 4, Sheet 27  
1968

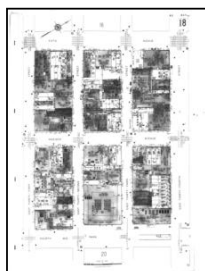


Volume 4, Sheet 18  
1968

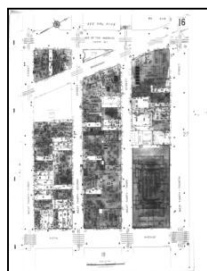


Volume 4, Sheet 29  
1968

### 1950 Source Sheets

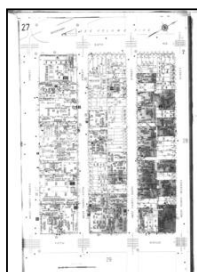


Volume 4, Sheet 18  
1950



Volume 4, Sheet 16  
1950

### 1929 Source Sheets



Volume 4, Sheet 27  
1929



Volume 4, Sheet 29  
1929

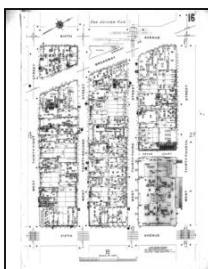
### 1910 Source Sheets



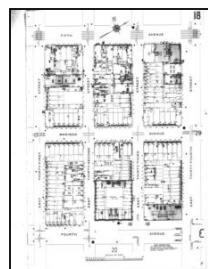
Volume 4, Sheet 29  
1910



Volume 4, Sheet 27  
1910



Volume 4, Sheet 16  
1910



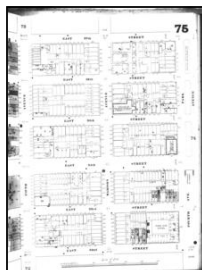
Volume 4, Sheet 18  
1910

## Sanborn Sheet Key

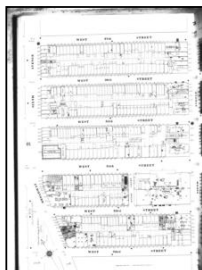
This Certified Sanborn Map Report is based upon the following Sanborn Fire Insurance map sheets.



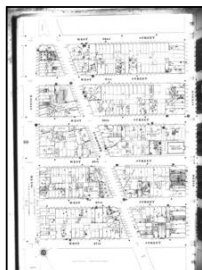
### 1899 Source Sheets



Volume 4, Sheet 75  
1899



Volume 4, Sheet 75  
1899

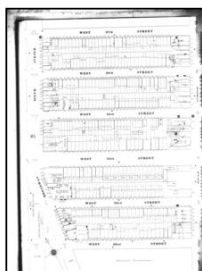


Volume 4, Sheet 72  
1899

### 1890 Source Sheets



Volume 4, Sheet 72  
1890

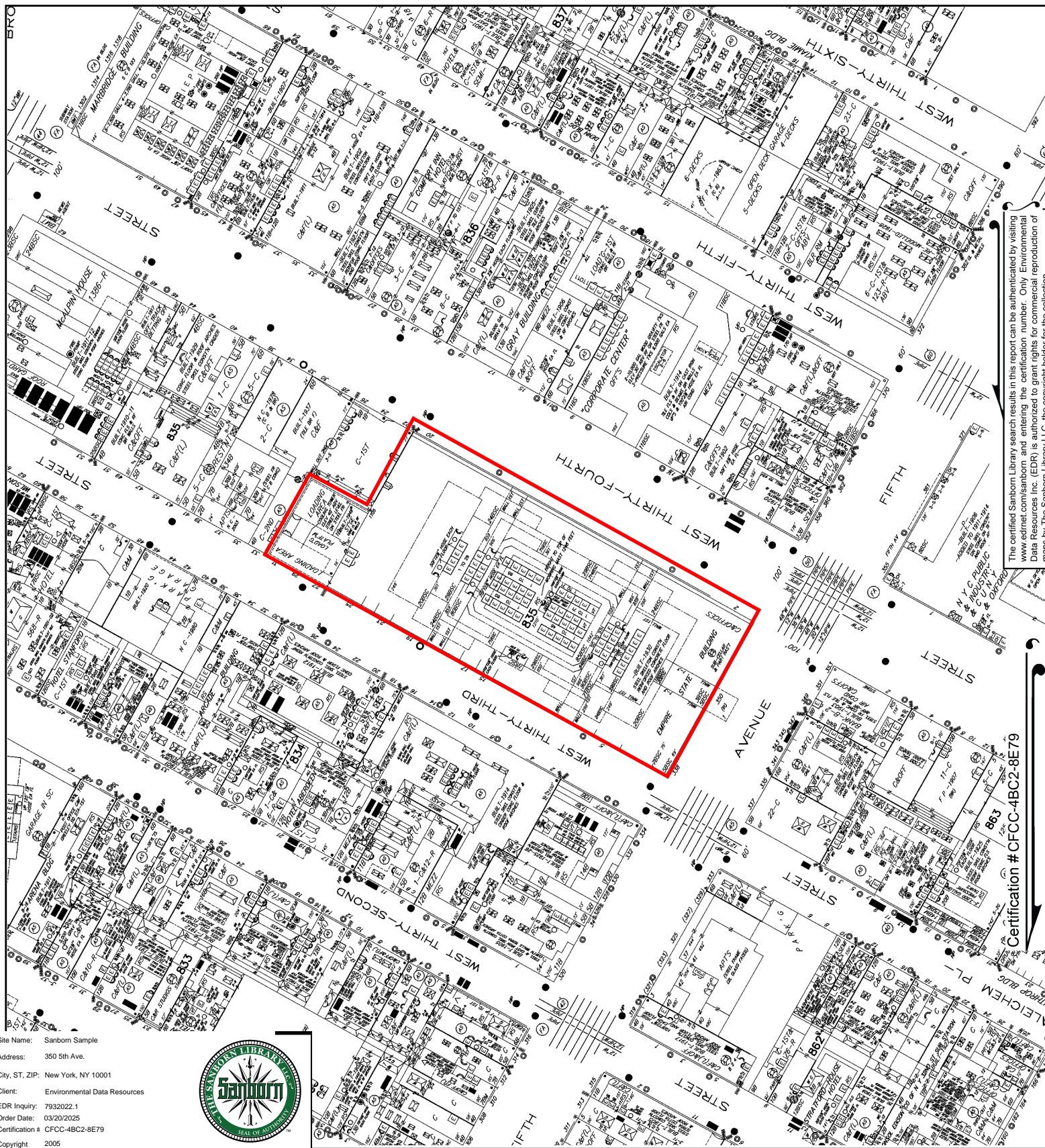


Volume 4, Sheet 75  
1890



Volume 4, Sheet 75  
1890





The certified Sanborn Library search results in this report can be authenticated by visiting [www.edrnet.com/sanborn](http://www.edrnet.com/sanborn) and entering the certification number. Only Environmental Data Resources Inc. (EDR) is authorized to grant rights for commercial reproduction of maps by The Sanborn Library LLC, the copyright holder for the collection.

Certification #CFCC-4BC2-8E79

Site Name: Sanborn Sample

Address: 350 5th Ave.

City, ST, ZIP: New York, NY 10001

Client: Environmental Data Resources

EDR Inquiry: 7932022.1

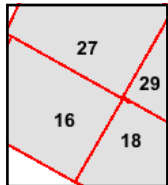
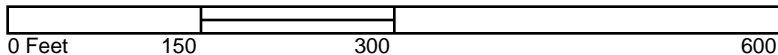
Order Date: 03/20/2025

Certification # CFCC-4BC2-8E79

Copyright 2005



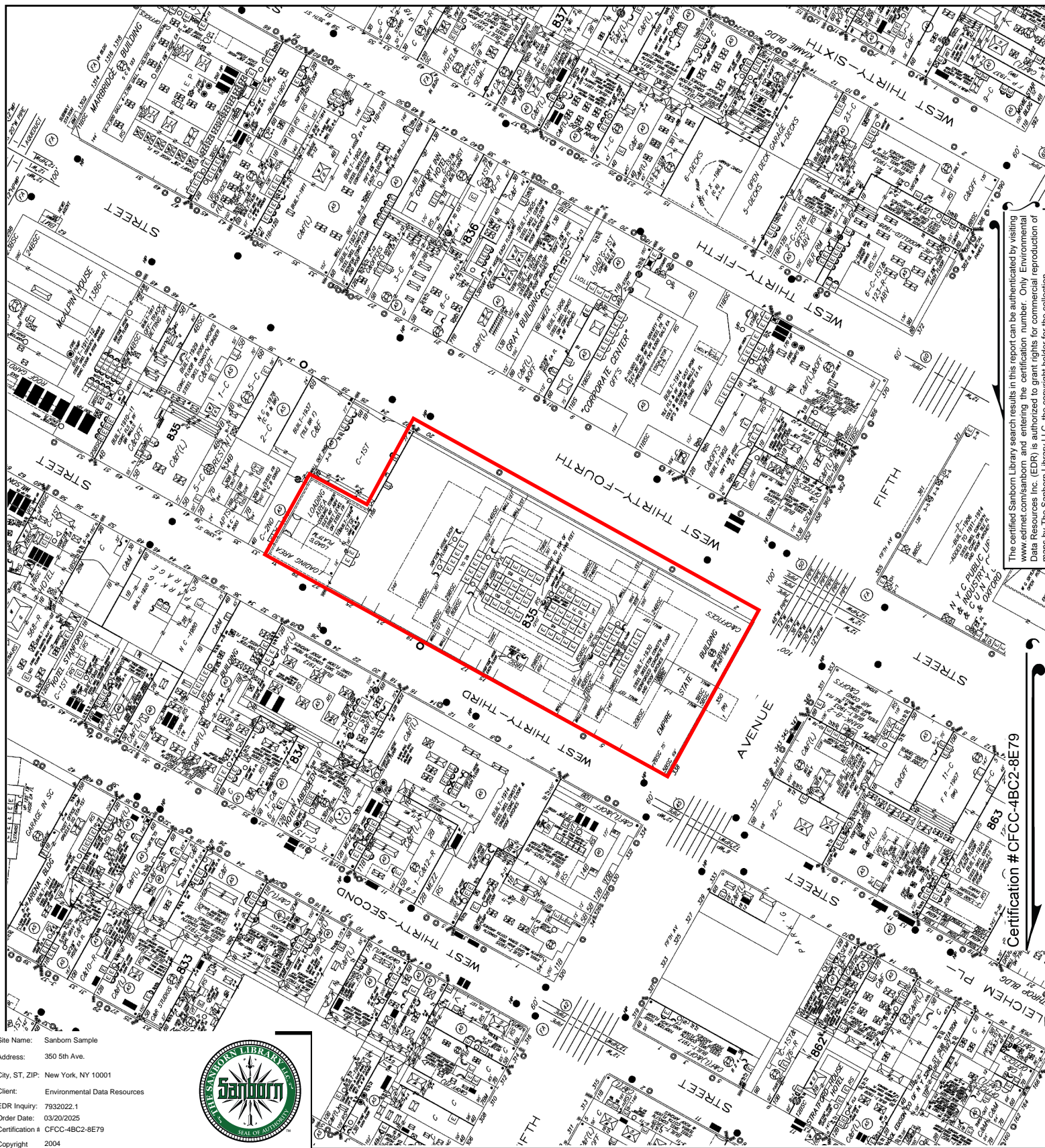
This Certified Sanborn Map combines the following sheets.  
Outlined areas indicate map sheets within the collection.



Volume 4, Sheet 29  
Volume 4, Sheet 18  
Volume 4, Sheet 27  
Volume 4, Sheet 16







The certified Sanborn Library search results in this report can be authenticated by visiting [www.edrnet.com/sanborn](http://www.edrnet.com/sanborn) and entering the certification number. Only Environmental Data Resources Inc. (EDR) is authorized to grant rights for commercial reproduction of maps by The Sanborn Library LLC, the copyright holder for the collection.

Certification #CFCC-4BC2-8E79

Site Name: Sanborn Sample

Address: 350 5th Ave.

City, ST, ZIP: New York, NY 10001

Client: Environmental Data Resources

EDR Inquiry: 7932022.1

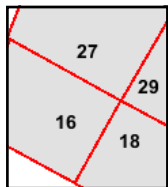
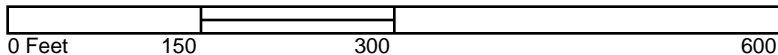
Order Date: 03/20/2025

Certification # CFCC-4BC2-8E79

Copyright 2004



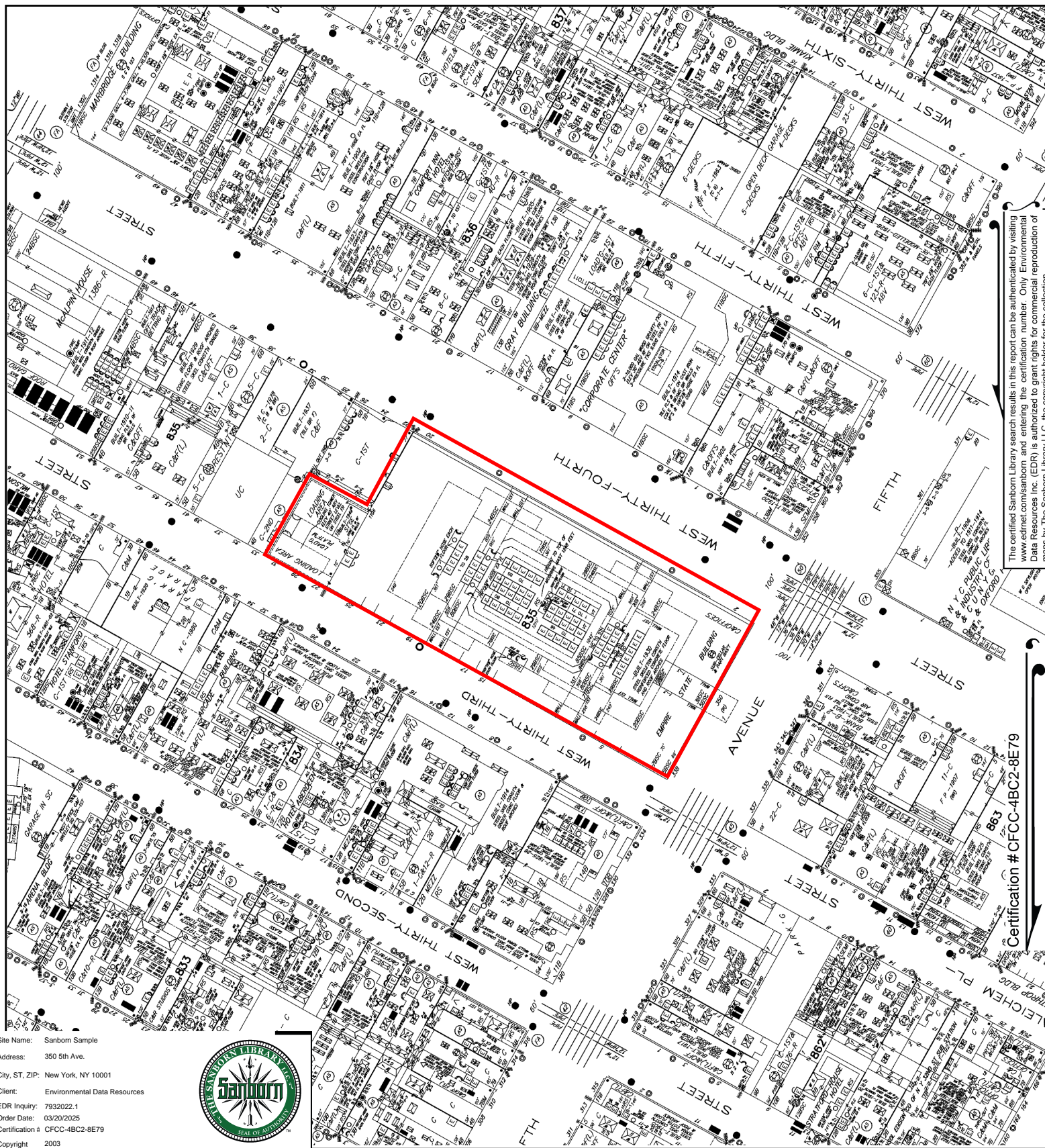
This Certified Sanborn Map combines the following sheets.  
Outlined areas indicate map sheets within the collection.



Volume 4, Sheet 16  
Volume 4, Sheet 27  
Volume 4, Sheet 18  
Volume 4, Sheet 29







The certified Sanborn Library search results in this report can be authenticated by visiting [www.edrnet.com/sanborn](http://www.edrnet.com/sanborn) and entering the certification number. Only Environmental Data Resources Inc. (EDR) is authorized to grant rights for commercial reproduction of maps by The Sanborn Library LLC, the copyright holder for the collection.

Certification #CFCC-4BC2-8E79

Site Name: Sanborn Sample

Address: 350 5th Ave.

City, ST, ZIP: New York, NY 10001

Client: Environmental Data Resources

EDR Inquiry: 7932022.1

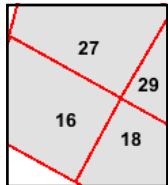
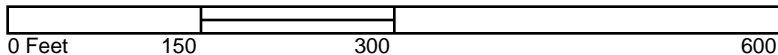
Order Date: 03/20/2025

Certification # CFCC-4BC2-8E79

Copyright 2003



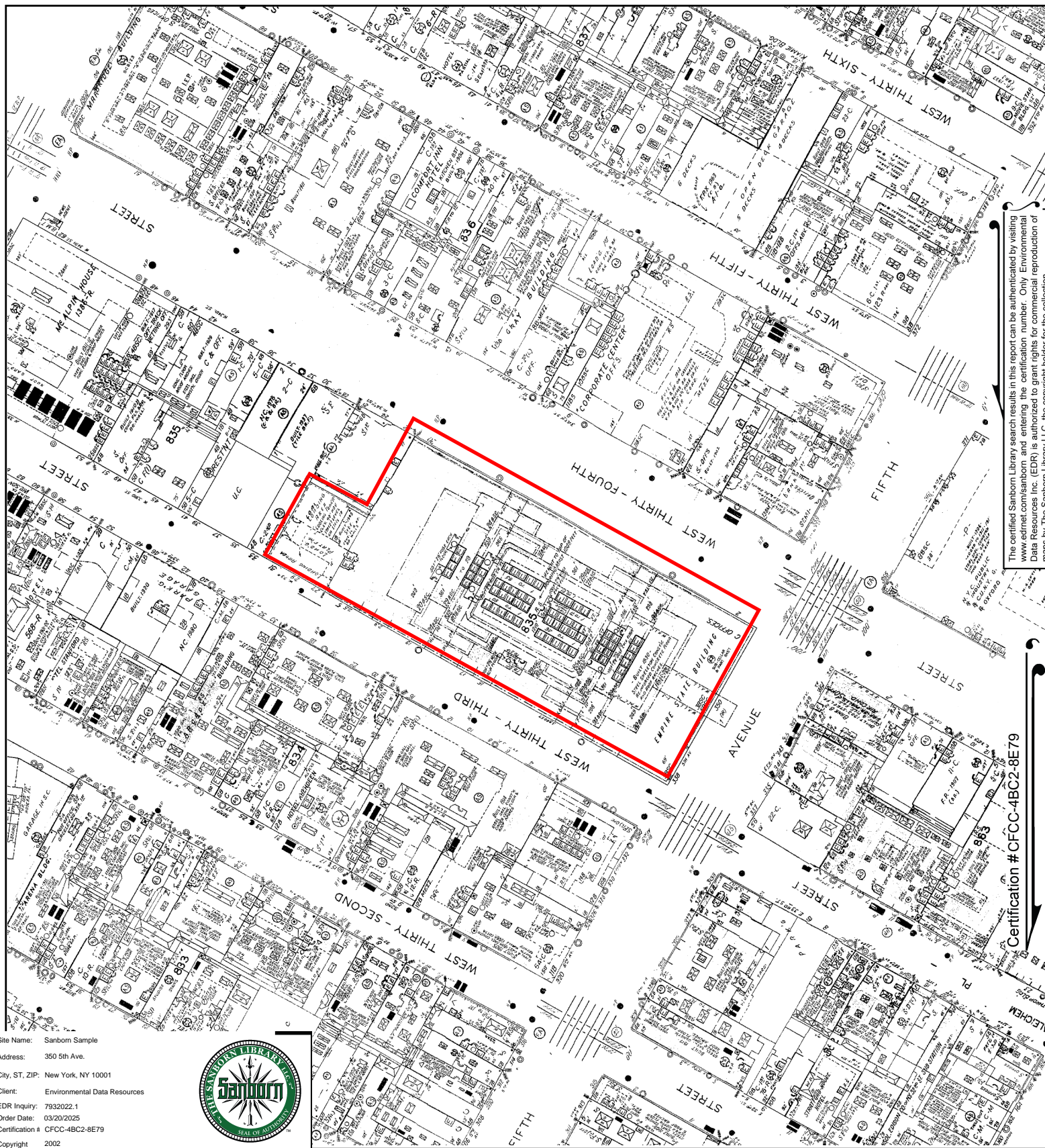
This Certified Sanborn Map combines the following sheets.  
Outlined areas indicate map sheets within the collection.



Volume 4, Sheet 29  
Volume 4, Sheet 18  
Volume 4, Sheet 27  
Volume 4, Sheet 16







The certified Sanborn Library search results in this report can be authenticated by visiting [www.edrnet.com/sanborn](http://www.edrnet.com/sanborn) and entering the certification number. Only Environmental Data Resources Inc. (EDR) is authorized to grant rights for commercial reproduction of maps by The Sanborn Library LLC, the copyright holder for the collection.

Certification #CFCC-4BC2-8E79

Site Name: Sanborn Sample

Address: 350 5th Ave.

City, ST, ZIP: New York, NY 10001

Client: Environmental Data Resources

EDR Inquiry: 7932022.1

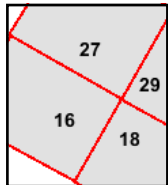
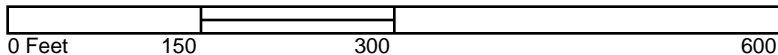
Order Date: 03/20/2025

Certification # CFCC-4BC2-8E79

Copyright 2002



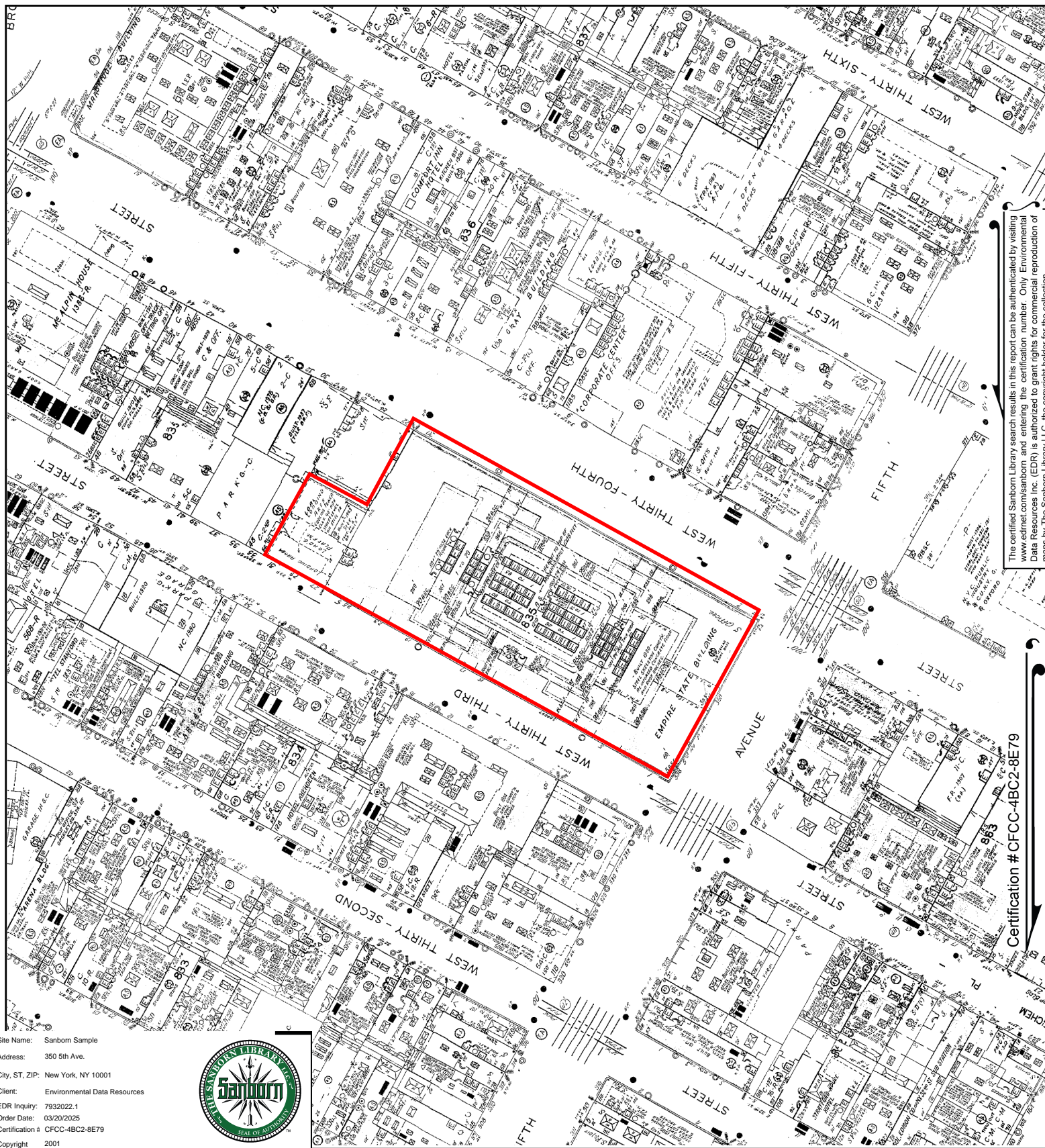
This Certified Sanborn Map combines the following sheets.  
Outlined areas indicate map sheets within the collection.



Volume 4, Sheet 29  
Volume 4, Sheet 16  
Volume 4, Sheet 27  
Volume 4, Sheet 18







The certified Sanborn Library search results in this report can be authenticated by visiting [www.edr.com/sanborn](http://www.edr.com/sanborn) and entering the certification number. Only Environmental Data Resources Inc. (EDR) is authorized to grant rights for commercial reproduction of maps by The Sanborn Library LLC, the copyright holder for the collection.

Certification #CFCC-4BC2-8E79

Site Name: Sanborn Sample

Address: 350 5th Ave.

City, ST, ZIP: New York, NY 10001

Client: Environmental Data Resources

EDR Inquiry: 7932022.1

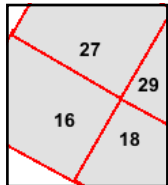
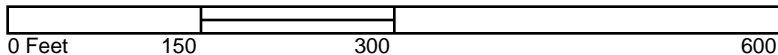
Order Date: 03/20/2025

Certification # CFCC-4BC2-8E79

Copyright 2001



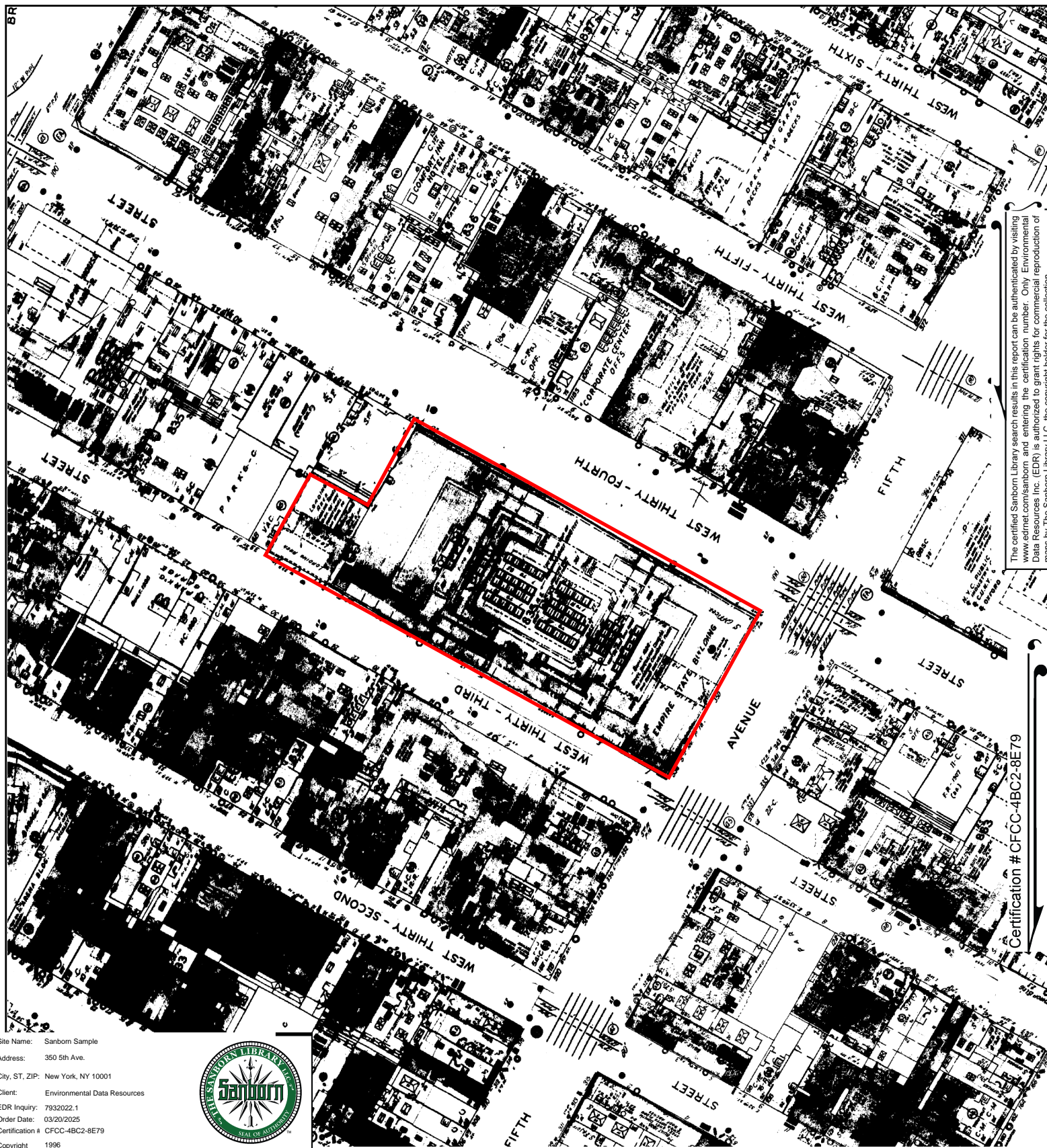
This Certified Sanborn Map combines the following sheets.  
Outlined areas indicate map sheets within the collection.



Volume 4, Sheet 29  
Volume 4, Sheet 18  
Volume 4, Sheet 27  
Volume 4, Sheet 16







The certified Sanborn Library search results in this report can be authenticated by visiting [www.edrnet.com/sanborn](http://www.edrnet.com/sanborn) and entering the certification number. Only Environmental Data Resources Inc. (EDR) is authorized to grant rights for commercial reproduction of maps by The Sanborn Library LLC, the copyright holder for the collection.

Certification #CFCC-4BC2-8E79

Site Name: Sanborn Sample

Address: 350 5th Ave.

City, ST, ZIP: New York, NY 10001

Client: Environmental Data Resources

EDR Inquiry: 7932022.1

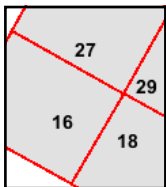
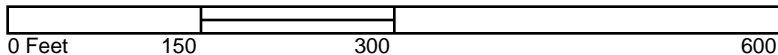
Order Date: 03/20/2025

Certification # CFCC-4BC2-8E79

Copyright 1996



This Certified Sanborn Map combines the following sheets.  
Outlined areas indicate map sheets within the collection.



Volume 4, Sheet 16  
Volume 4, Sheet 27  
Volume 4, Sheet 29  
Volume 4, Sheet 18







The certified Sanborn Library search results in this report can be authenticated by visiting [www.edrnet.com/sanborn](http://www.edrnet.com/sanborn) and entering the certification number. Only Environmental Data Resources Inc. (EDR) is authorized to grant rights for commercial reproduction of maps by The Sanborn Library LLC, the copyright holder for the collection.

Certification #CFCC-4BC2-8E79

Site Name: Sanborn Sample

Address: 350 5th Ave.

City, ST, ZIP: New York, NY 10001

Client: Environmental Data Resources

EDR Inquiry: 7932022.1

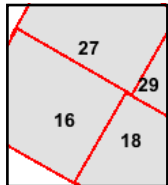
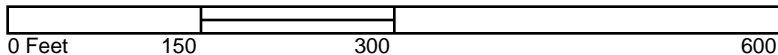
Order Date: 03/20/2025

Certification # CFCC-4BC2-8E79

Copyright 1995



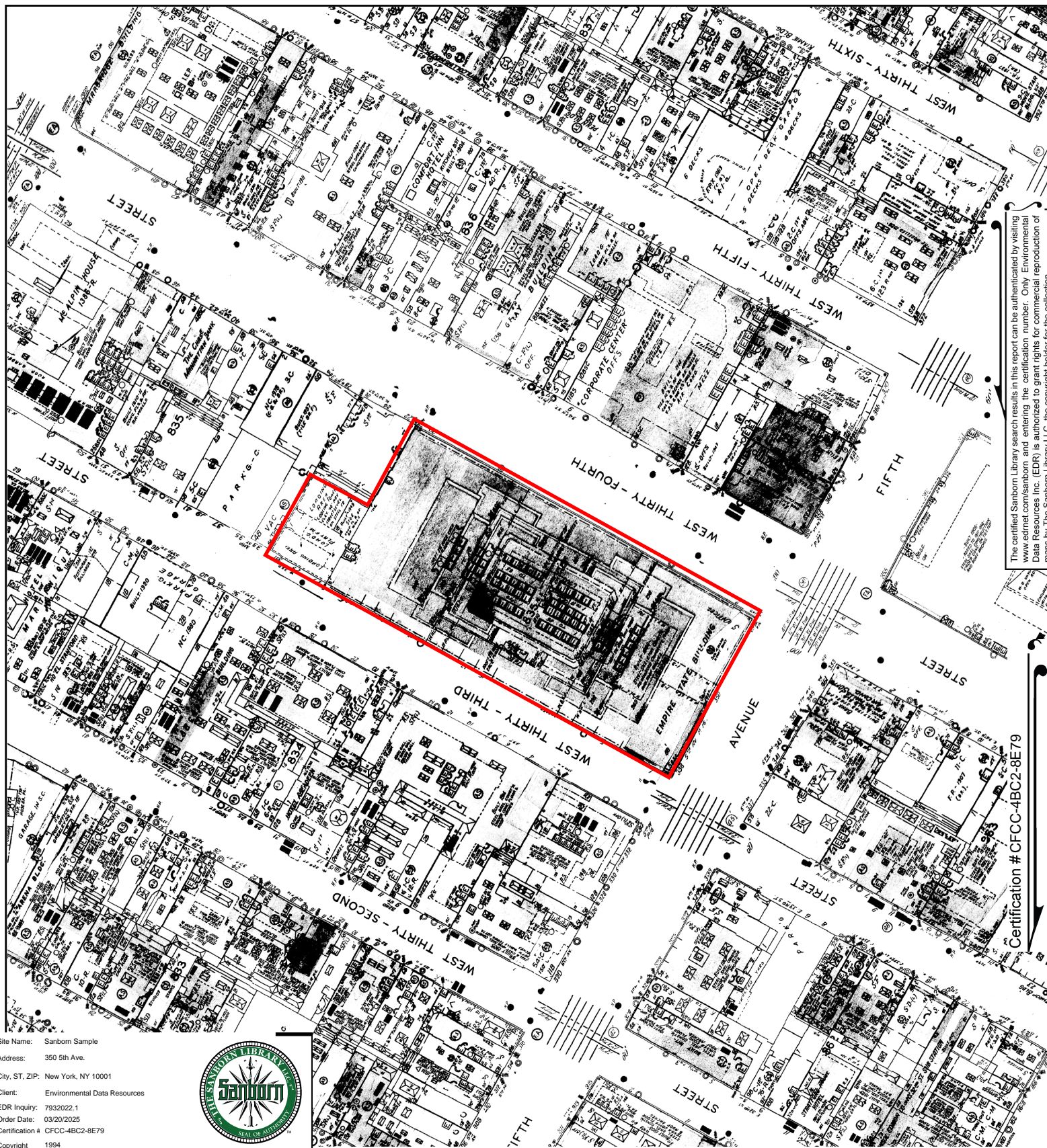
This Certified Sanborn Map combines the following sheets.  
Outlined areas indicate map sheets within the collection.



Volume 4, Sheet 18  
Volume 4, Sheet 29  
Volume 4, Sheet 27  
Volume 4, Sheet 16







The certified Sanborn Library search results in this report can be authenticated by visiting [www.edrnet.com/sanborn](http://www.edrnet.com/sanborn) and entering the certification number. Only Environmental Data Resources Inc. (EDR) is authorized to grant rights for commercial reproduction of maps by The Sanborn Library LLC, the copyright holder for the collection.

Certification #CFCC-4BC2-8E79

Site Name: Sanborn Sample

Address: 350 5th Ave.

City, ST, ZIP: New York, NY 10001

Client: Environmental Data Resources

EDR Inquiry: 7932022.1

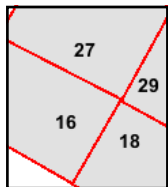
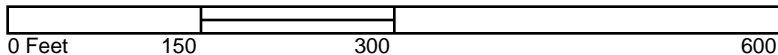
Order Date: 03/20/2025

Certification # CFCC-4BC2-8E79

Copyright 1994



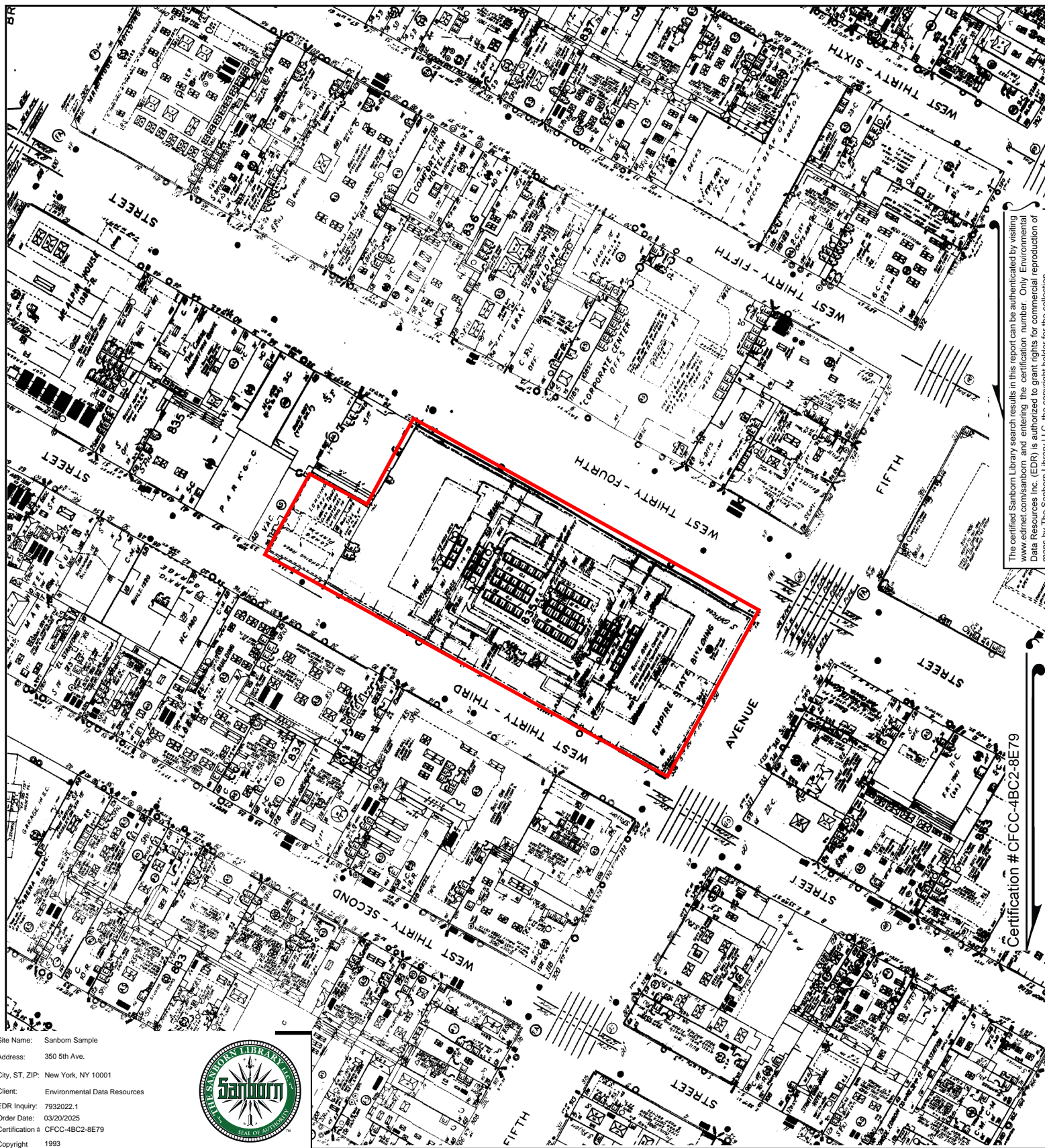
This Certified Sanborn Map combines the following sheets.  
Outlined areas indicate map sheets within the collection.



Volume 4, Sheet 16  
Volume 4, Sheet 27  
Volume 4, Sheet 18  
Volume 4, Sheet 29







The certified Sanborn Library search results in this report can be authenticated by visiting [www.edrnet.com/sanborn](http://www.edrnet.com/sanborn) and entering the certification number. Only Environmental Data Resources Inc. (EDR) is authorized to grant rights for commercial reproduction of maps by The Sanborn Library LLC, the copyright holder for the collection.

Certification #CFCC-4BC2-8E79

Site Name: Sanborn Sample

Address: 350 5th Ave.

City, ST, ZIP: New York, NY 10001

Client: Environmental Data Resources

EDR Inquiry: 7932022.1

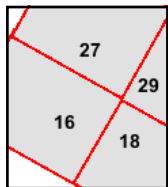
Order Date: 03/20/2025

Certification # CFCC-4BC2-8E79

Copyright 1993



This Certified Sanborn Map combines the following sheets.  
Outlined areas indicate map sheets within the collection.

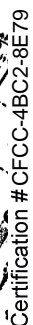


Volume 4, Sheet 29  
Volume 4, Sheet 18  
Volume 4, Sheet 27  
Volume 4, Sheet 16

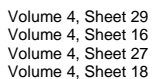
0 Feet 150 300 600



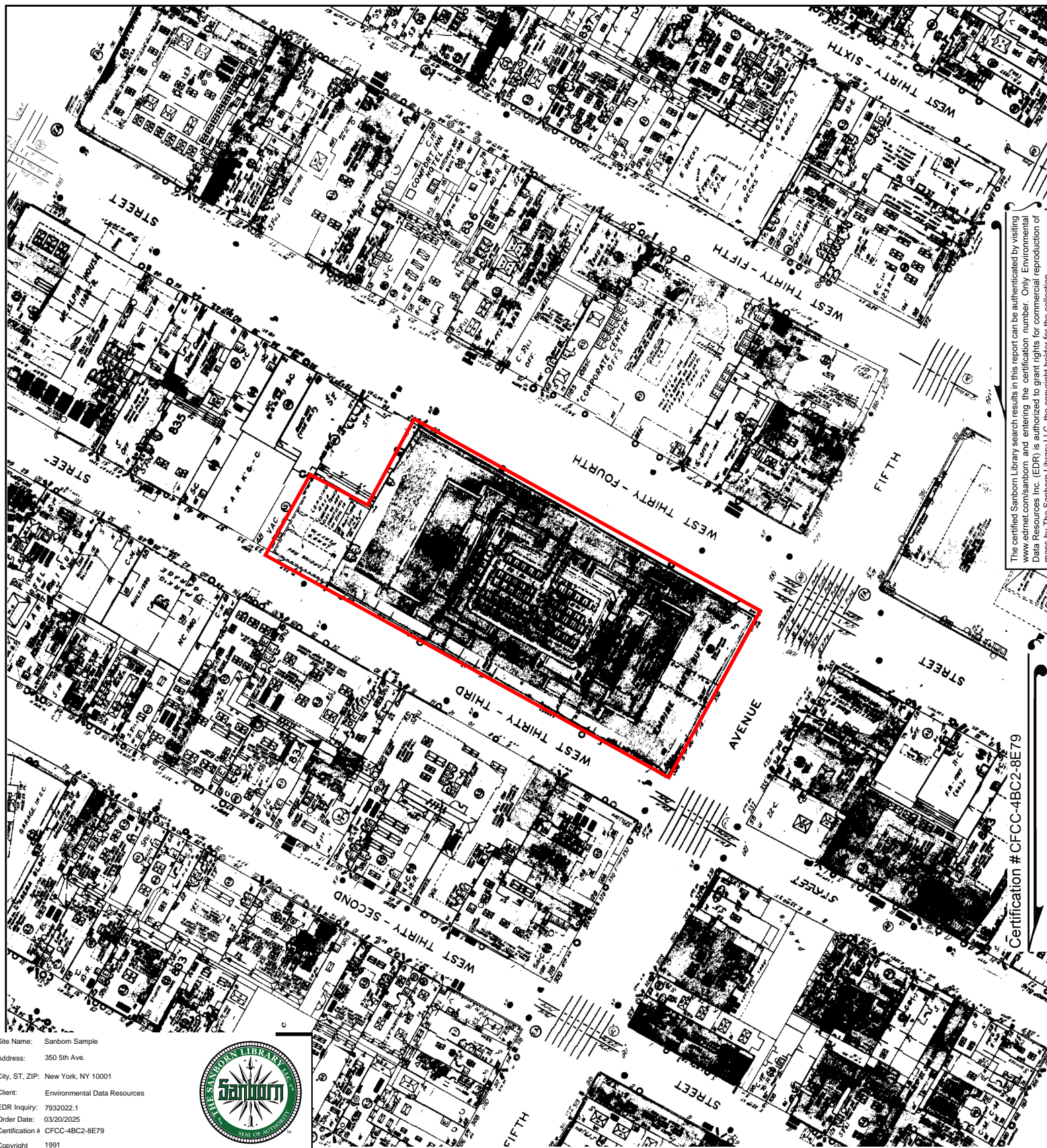




Copyright 1992







The certified Sanborn Library search results in this report can be authenticated by visiting [www.edr.com/sanborn](http://www.edr.com/sanborn) and entering the certification number. Only Environmental Data Resources Inc. (EDR) is authorized to grant rights for commercial reproduction of maps by The Sanborn Library LLC, the copyright holder for the collection.

Certification #CFCC-4BC2-8E79

Site Name: Sanborn Sample

Address: 350 5th Ave.

City, ST, ZIP: New York, NY 10001

Client: Environmental Data Resources

EDR Inquiry: 7932022.1

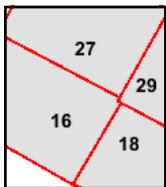
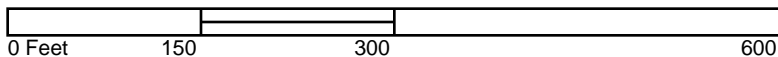
Order Date: 03/20/2025

Certification # CFCC-4BC2-8E79

Copyright 1991



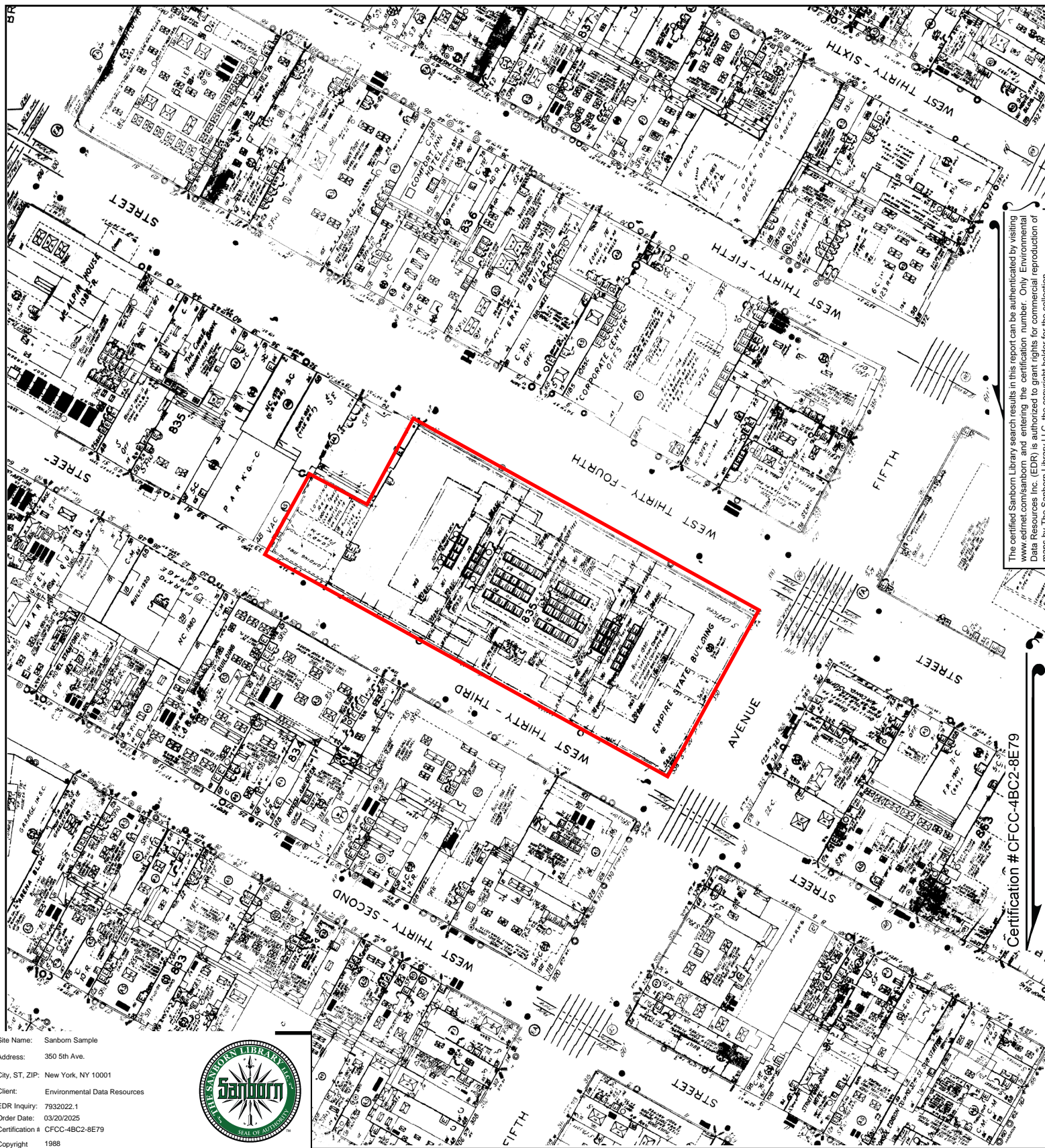
This Certified Sanborn Map combines the following sheets.  
Outlined areas indicate map sheets within the collection.



Volume 4, Sheet 29  
Volume 4, Sheet 18  
Volume 4, Sheet 27  
Volume 4, Sheet 16







The certified Sanborn Library search results in this report can be authenticated by visiting [www.edrnet.com/sanborn](http://www.edrnet.com/sanborn) and entering the certification number. Only Environmental Data Resources Inc. (EDR) is authorized to grant rights for commercial reproduction of maps by The Sanborn Library LLC, the copyright holder for the collection.

Certification #CFCC-4BC2-8E79

Site Name: Sanborn Sample

Address: 350 5th Ave.

City, ST, ZIP: New York, NY 10001

Client: Environmental Data Resources

EDR Inquiry: 7932022.1

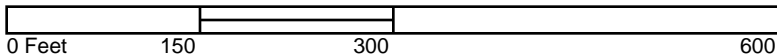
Order Date: 03/20/2025

Certification # CFCC-4BC2-8E79

Copyright 1988



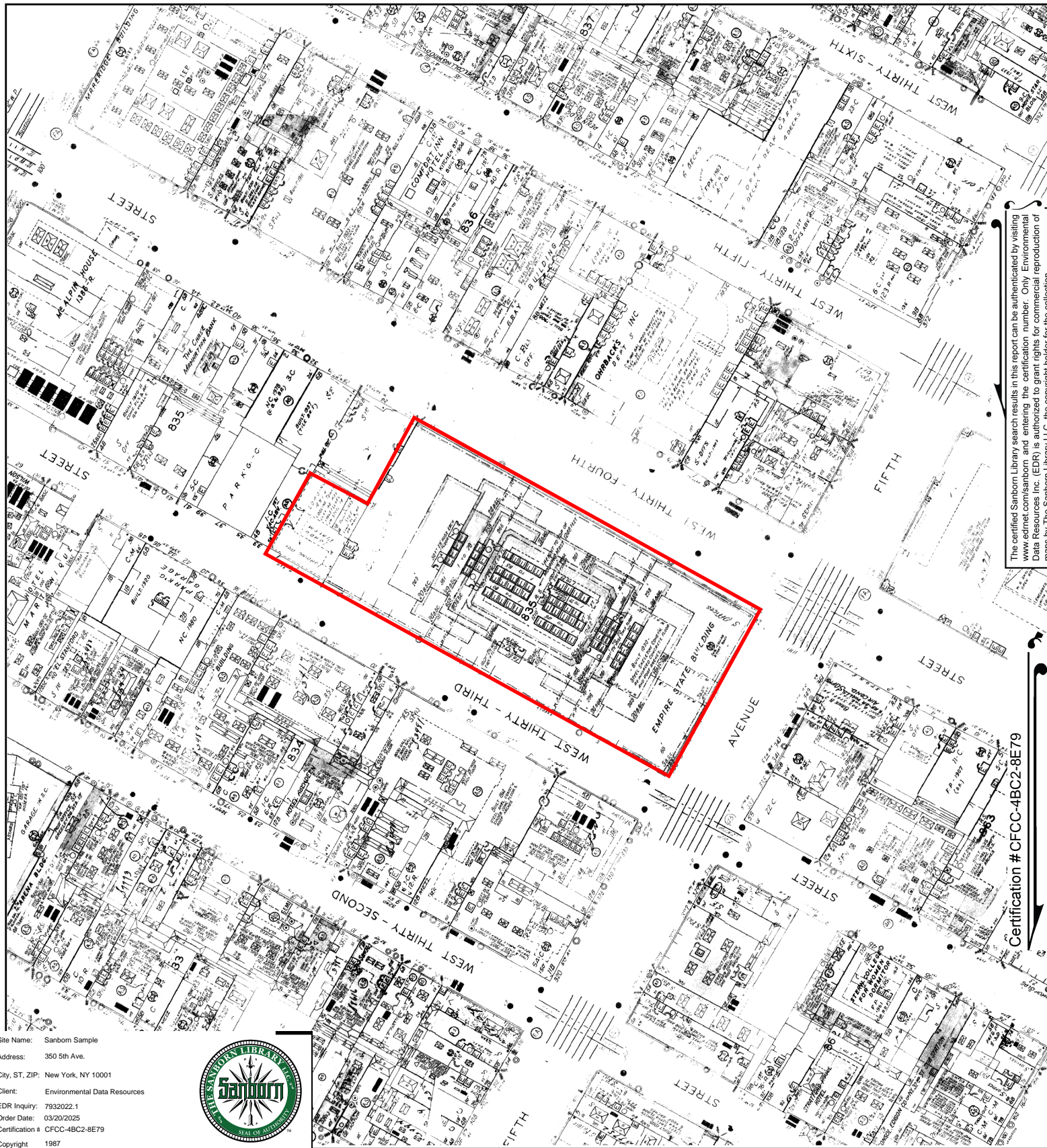
This Certified Sanborn Map combines the following sheets.  
Outlined areas indicate map sheets within the collection.



Volume 4, Sheet 18  
Volume 4, Sheet 16  
Volume 4, Sheet 27  
Volume 4, Sheet 29







The certified Sanborn Library search results in this report can be authenticated by visiting [www.edrnet.com/sanborn](http://www.edrnet.com/sanborn) and entering the certification number. Only Environmental Data Resources Inc. (EDR) is authorized to grant rights for commercial reproduction of maps by The Sanborn Library LLC, the copyright holder for the collection.

Certification #CFCC-4BC2-8E79

Site Name: Sanborn Sample

Address: 350 5th Ave.

City, ST, ZIP: New York, NY 10001

Client: Environmental Data Resources

EDR Inquiry: 7932022.1

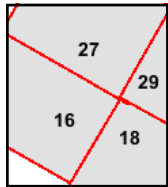
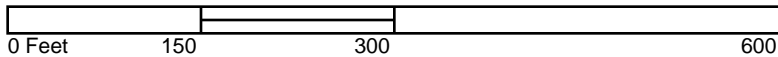
Order Date: 03/20/2025

Certification # CFCC-4BC2-8E79

Copyright 1987



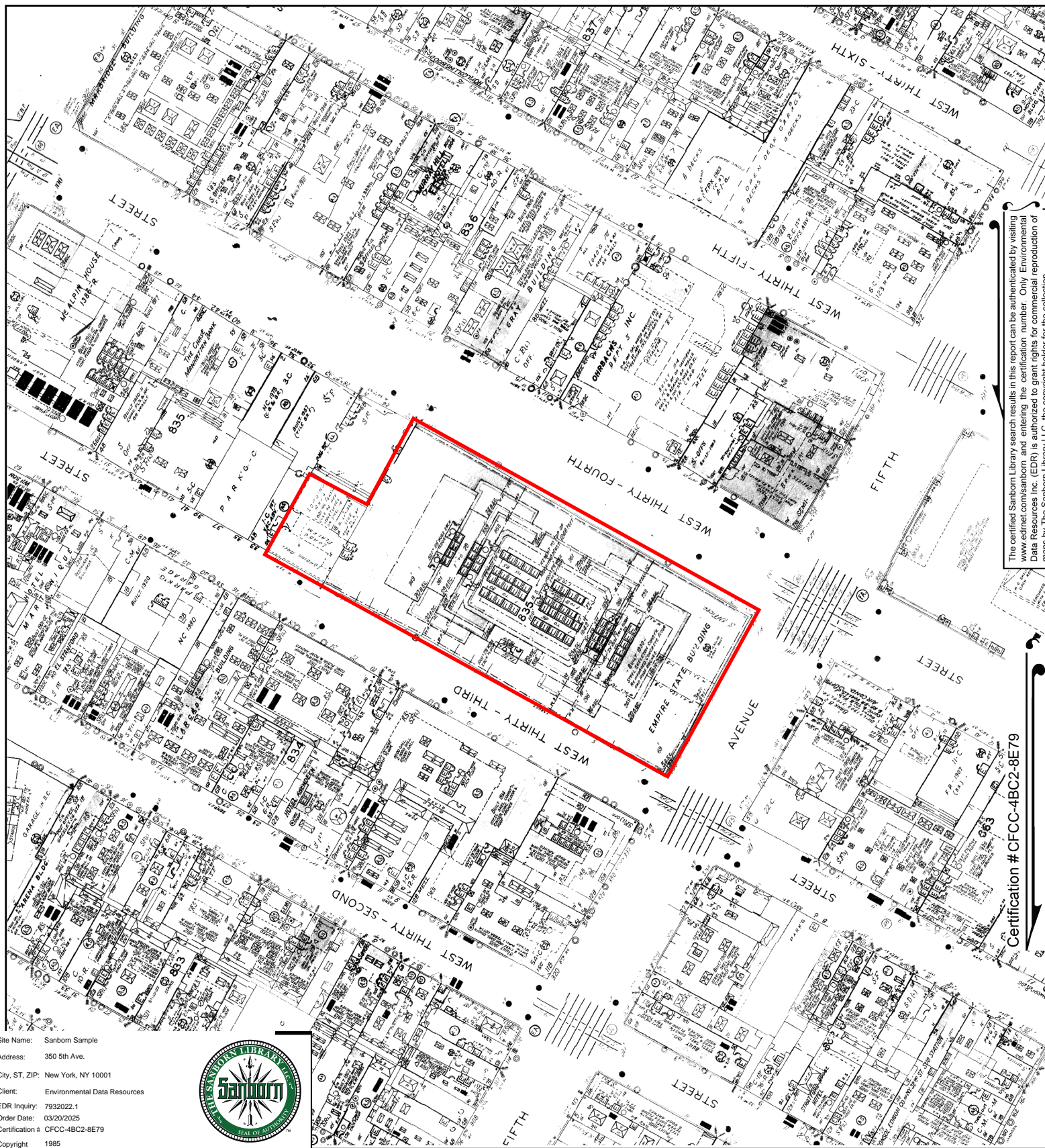
This Certified Sanborn Map combines the following sheets.  
Outlined areas indicate map sheets within the collection.



Volume 4, Sheet 29  
Volume 4, Sheet 18  
Volume 4, Sheet 27  
Volume 4, Sheet 16







The certified Sanborn Library search results in this report can be authenticated by visiting [www.edrnet.com/sanborn](http://www.edrnet.com/sanborn) and entering the certification number. Only Environmental Data Resources Inc. (EDR) is authorized to grant rights for commercial reproduction of maps by The Sanborn Library LLC, the copyright holder for the collection.

Certification #CFCC-4BC2-8E79

Site Name: Sanborn Sample

Address: 350 5th Ave.

City, ST, ZIP: New York, NY 10001

Client: Environmental Data Resources

EDR Inquiry: 7932022.1

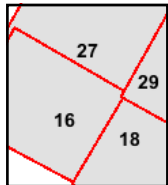
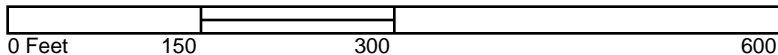
Order Date: 03/20/2025

Certification # CFCC-4BC2-8E79

Copyright 1985



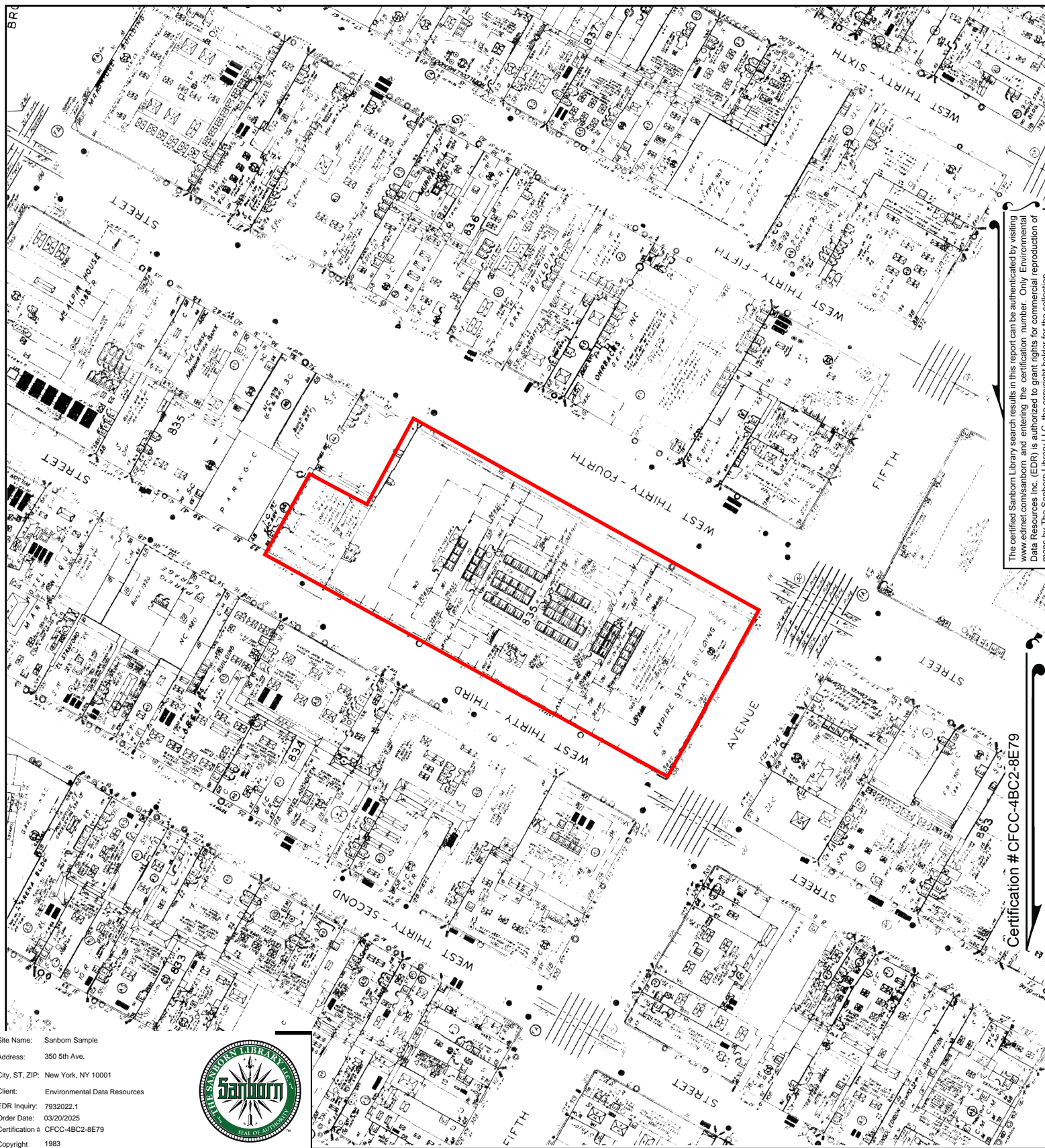
This Certified Sanborn Map combines the following sheets.  
Outlined areas indicate map sheets within the collection.



Volume 4, Sheet 16  
Volume 4, Sheet 27  
Volume 4, Sheet 29  
Volume 4, Sheet 18







The certified Sanborn Library search results in this report can be authenticated by visiting [www.edrnet.com/sanborn](http://www.edrnet.com/sanborn) and entering the certification number. Only Environmental Data Resources Inc. (EDR) is authorized to grant rights for commercial reproduction of maps by The Sanborn Library LLC, the copyright holder for the collection.

Certification #CFCC-4BC2-8E79

Site Name: Sanborn Sample

Address: 350 5th Ave.

City, ST, ZIP: New York, NY 10001

Client: Environmental Data Resources

EDR Inquiry: 7932022.1

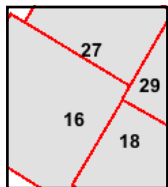
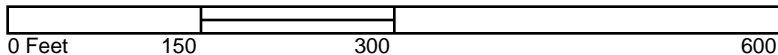
Order Date: 03/20/2025

Certification # CFCC-4BC2-8E79

Copyright 1983



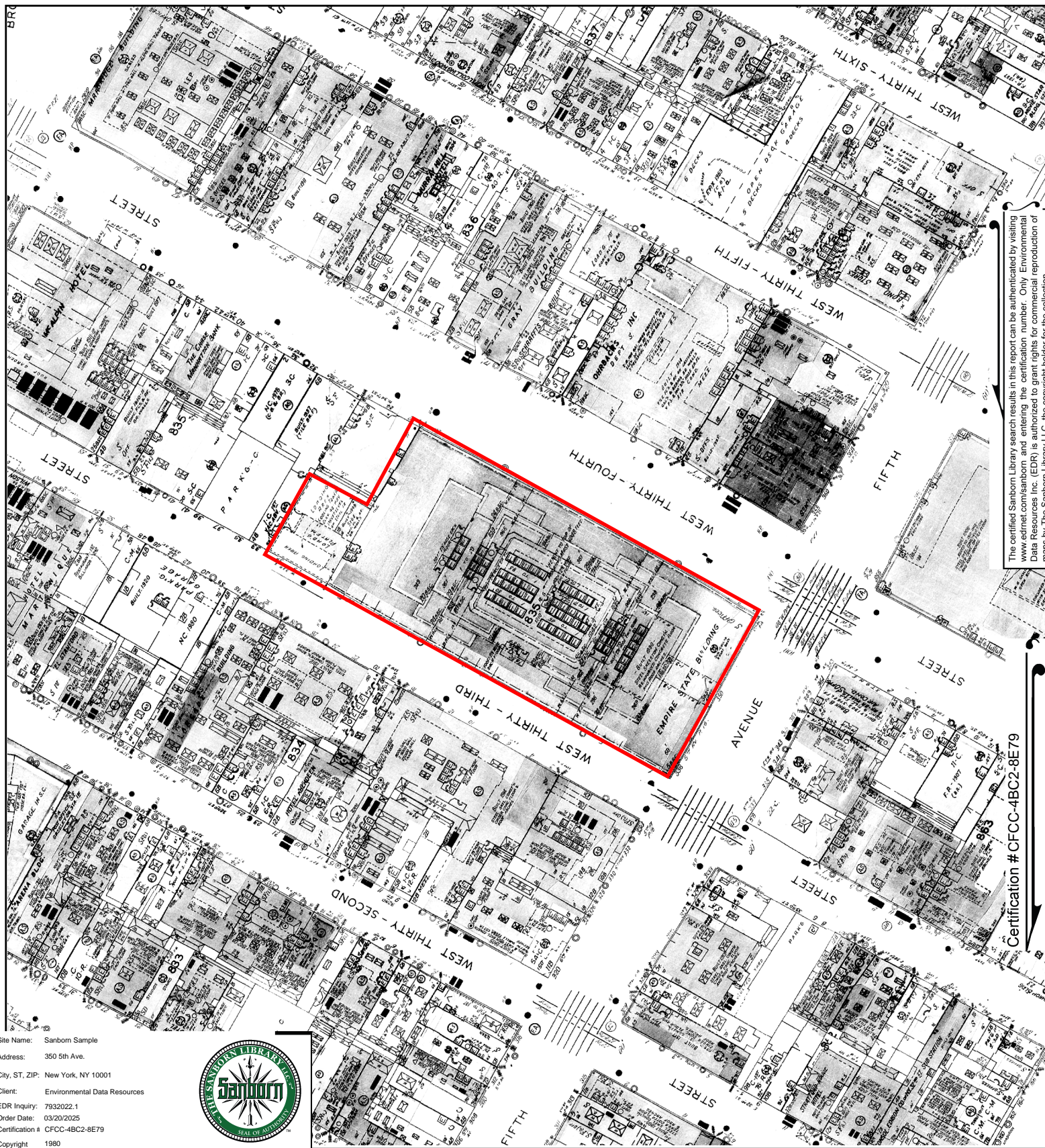
This Certified Sanborn Map combines the following sheets.  
Outlined areas indicate map sheets within the collection.



Volume 4, Sheet 29  
Volume 4, Sheet 18  
Volume 4, Sheet 27  
Volume 4, Sheet 16







The certified Sanborn Library search results in this report can be authenticated by visiting [www.edrnet.com/sanborn](http://www.edrnet.com/sanborn) and entering the certification number. Only Environmental Data Resources Inc. (EDR) is authorized to grant rights for commercial reproduction of maps by The Sanborn Library LLC, the copyright holder for the collection.

Certification #CFCC-4BC2-8E79

Site Name: Sanborn Sample

Address: 350 5th Ave.

City, ST, ZIP: New York, NY 10001

Client: Environmental Data Resources

EDR Inquiry: 7932022.1

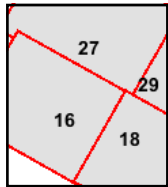
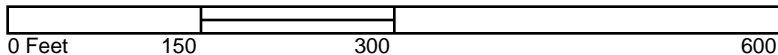
Order Date: 03/20/2025

Certification # CFCC-4BC2-8E79

Copyright 1980



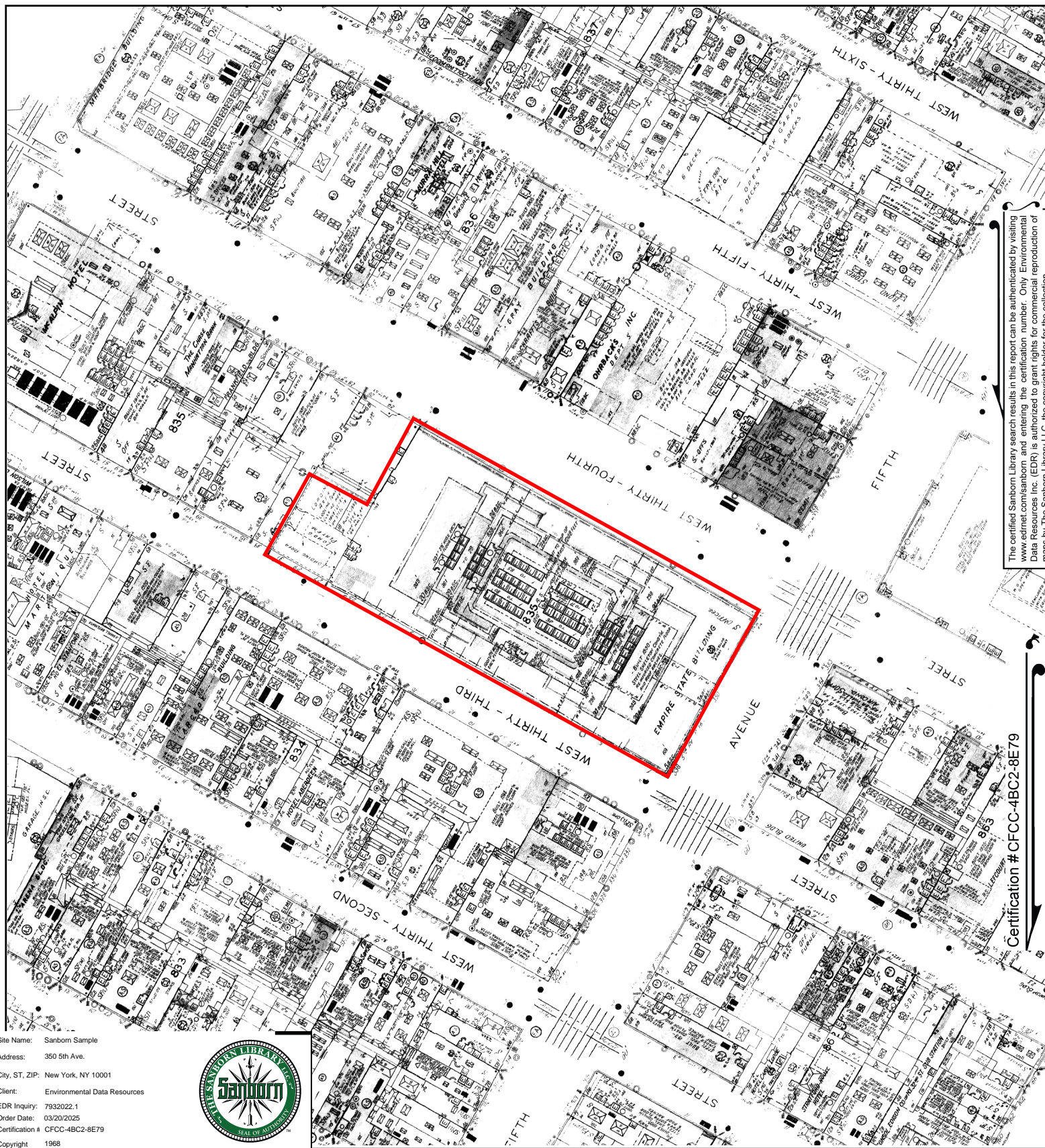
This Certified Sanborn Map combines the following sheets.  
Outlined areas indicate map sheets within the collection.



Volume 4, Sheet 16  
Volume 4, Sheet 27  
Volume 4, Sheet 18  
Volume 4, Sheet 29







The certified Sanborn Library search results in this report can be authenticated by visiting [www.edrnet.com/sanborn](http://www.edrnet.com/sanborn) and entering the certification number. Only Environmental Data Resources Inc. (EDR) is authorized to grant rights for commercial reproduction of maps by The Sanborn Library LLC, the copyright holder for the collection.

Certification #CFCC-4BC2-8E79

Site Name: Sanborn Sample

Address: 350 5th Ave.

City, ST, ZIP: New York, NY 10001

Client: Environmental Data Resources

EDR Inquiry: 7932022.1

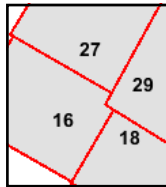
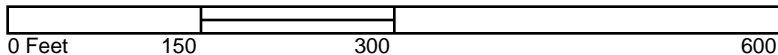
Order Date: 03/20/2025

Certification # CFCC-4BC2-8E79

Copyright 1968



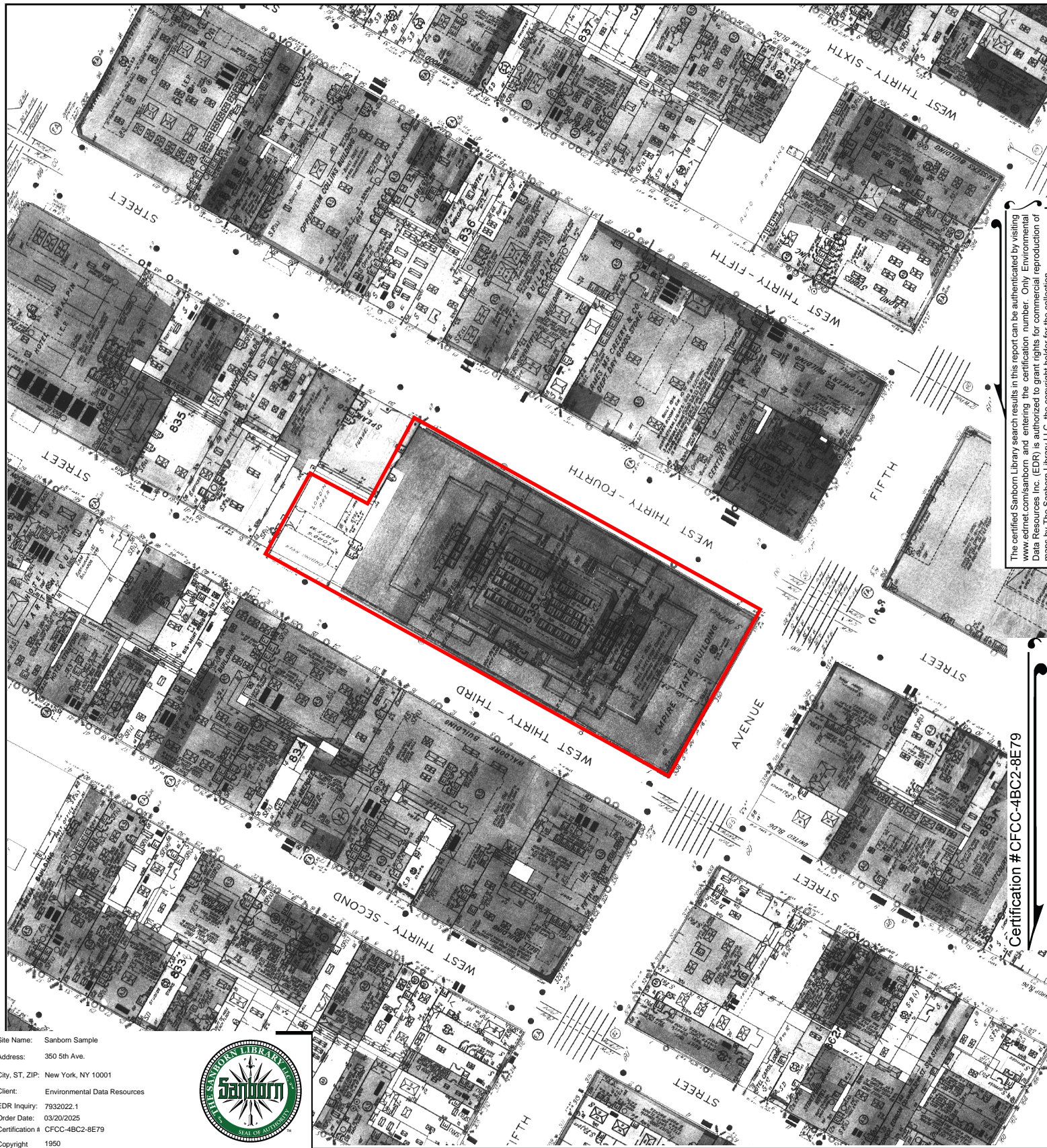
This Certified Sanborn Map combines the following sheets.  
Outlined areas indicate map sheets within the collection.



Volume 4, Sheet 29  
Volume 4, Sheet 18  
Volume 4, Sheet 27  
Volume 4, Sheet 16







The certified Sanborn Library search results in this report can be authenticated by visiting [www.edrnet.com/sanborn](http://www.edrnet.com/sanborn) and entering the certification number. Only Environmental Data Resources Inc. (EDR) is authorized to grant rights for commercial reproduction of maps by The Sanborn Library LLC, the copyright holder for the collection.

Certification #CFCC-4BC2-8E79

Site Name: Sanborn Sample

Address: 350 5th Ave.

City, ST, ZIP: New York, NY 10001

Client: Environmental Data Resources

EDR Inquiry: 7932022.1

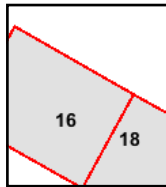
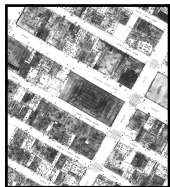
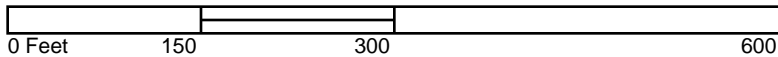
Order Date: 03/20/2025

Certification # CFCC-4BC2-8E79

Copyright 1950



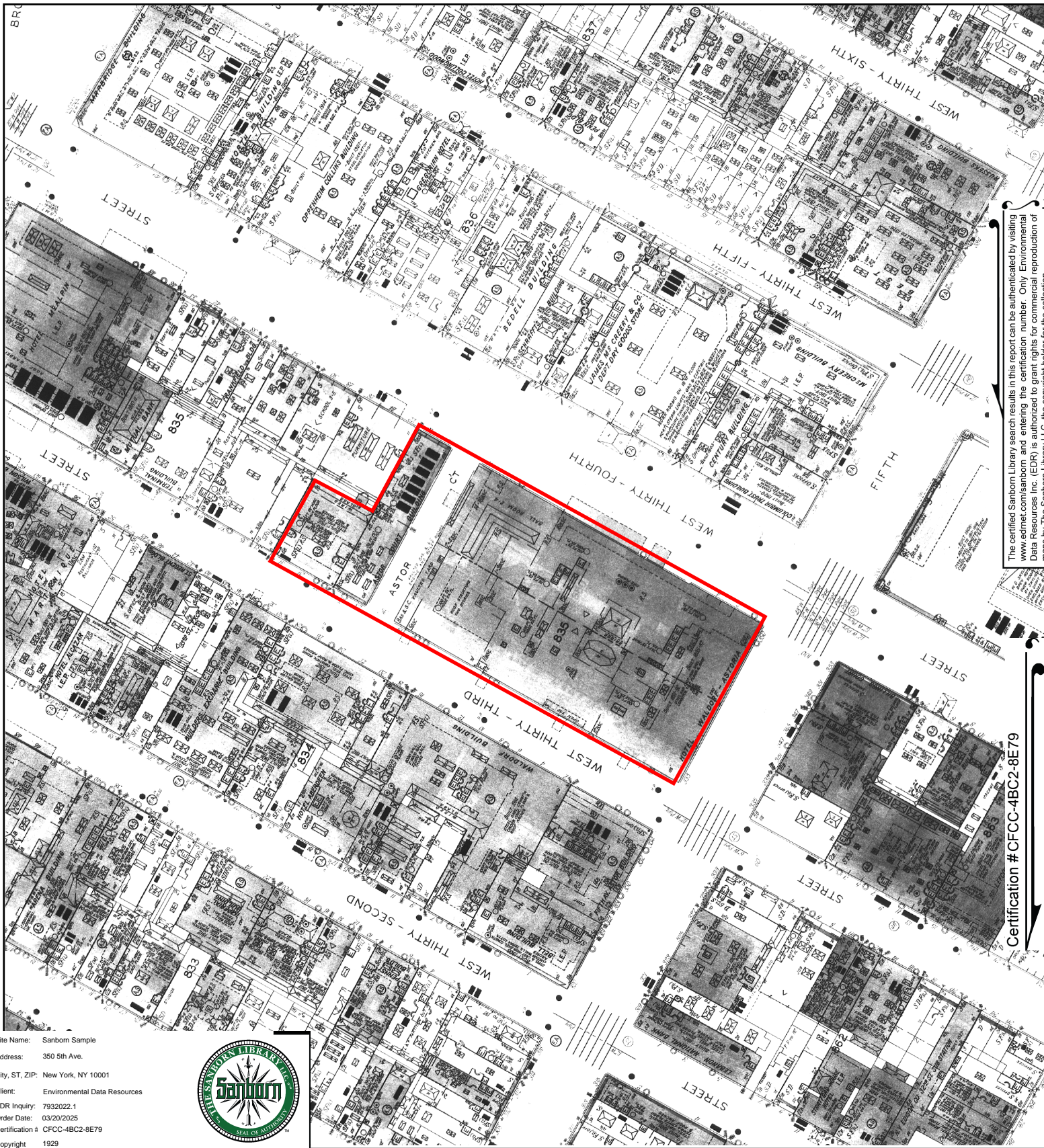
This Certified Sanborn Map combines the following sheets.  
Outlined areas indicate map sheets within the collection.



Volume 4, Sheet 16  
Volume 4, Sheet 18







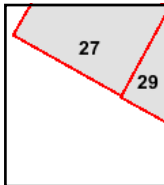
The certified Sanborn Library search results in this report can be authenticated by visiting [www.edrnet.com/sanborn](http://www.edrnet.com/sanborn) and entering the certification number. Only Environmental Data Resources Inc. (EDR) is authorized to grant rights for commercial reproduction of maps by The Sanborn Library LLC, the copyright holder for the collection.

Certification #CFCC-4BC2-8E79

Site Name: Sanborn Sample  
 Address: 350 5th Ave.  
 City, ST, ZIP: New York, NY 10001  
 Client: Environmental Data Resources  
 EDR Inquiry: 7932022.1  
 Order Date: 03/20/2025  
 Certification # CFCC-4BC2-8E79  
 Copyright 1929

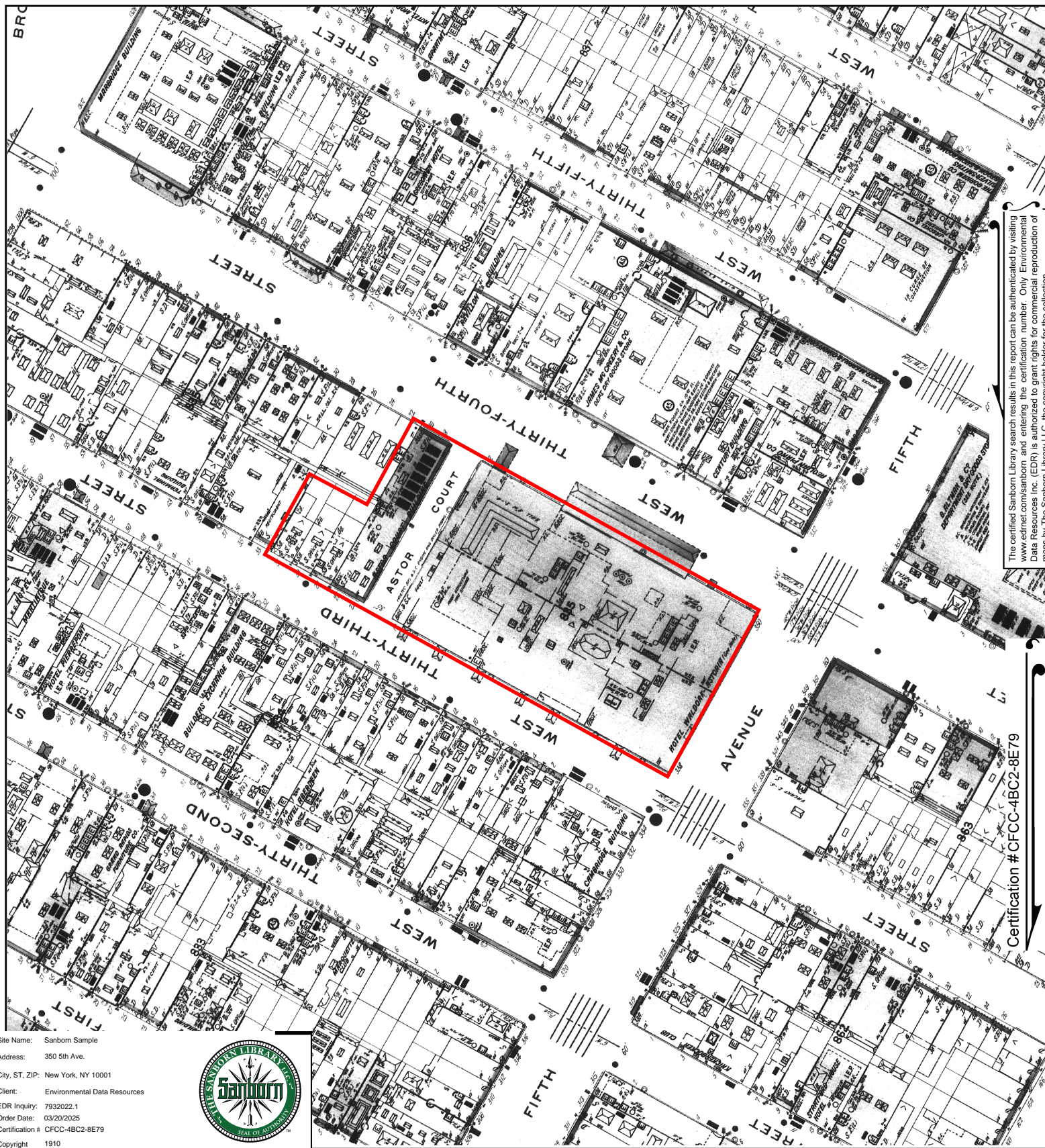


This Certified Sanborn Map combines the following sheets.  
 Outlined areas indicate map sheets within the collection.



Volume 4, Sheet 29  
 Volume 4, Sheet 27





The certified Sanborn Library search results in this report can be authenticated by visiting [www.edrnet.com/sanborn](http://www.edrnet.com/sanborn) and entering the certification number. Only Environmental Data Resources Inc. (EDR) is authorized to grant rights for commercial reproduction of maps by The Sanborn Library LLC, the copyright holder for the collection.

Certification #CFCC-4BC2-8E79

Site Name: Sanborn Sample

Address: 350 5th Ave.

City, ST, ZIP: New York, NY 10001

Client: Environmental Data Resources

EDR Inquiry: 7932022.1

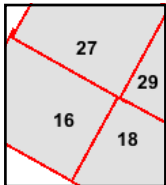
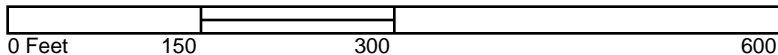
Order Date: 03/20/2025

Certification # CFCC-4BC2-8E79

Copyright 1910



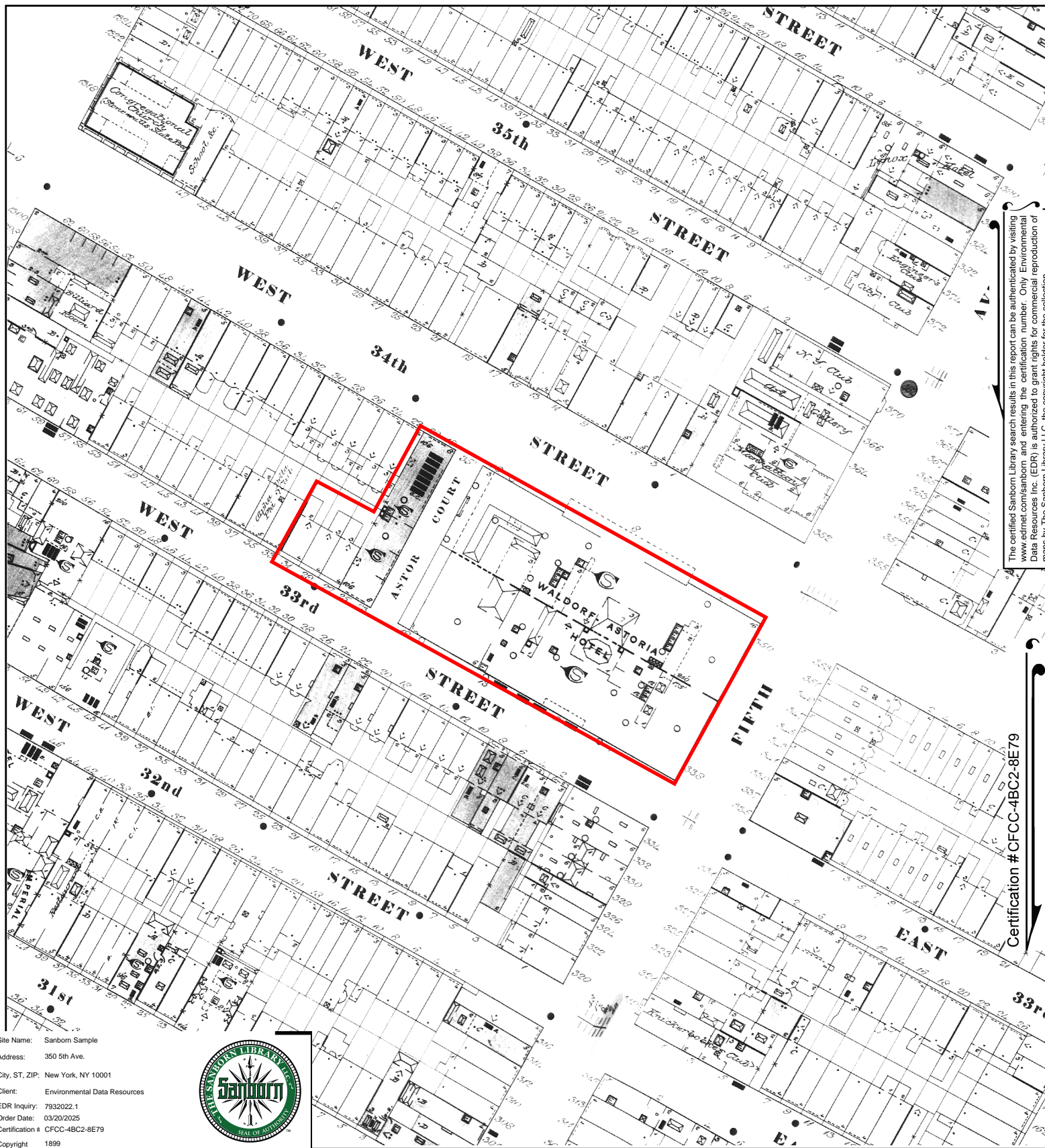
This Certified Sanborn Map combines the following sheets.  
Outlined areas indicate map sheets within the collection.



Volume 4, Sheet 18  
Volume 4, Sheet 16  
Volume 4, Sheet 27  
Volume 4, Sheet 29







The certified Sanborn Library search results in this report can be authenticated by visiting [www.edrnet.com/sanborn](http://www.edrnet.com/sanborn) and entering the certification number. Only Environmental Data Resources Inc. (EDR) is authorized to grant rights for commercial reproduction of maps by The Sanborn Library LLC, the copyright holder for the collection.

Certification #CFCC-4BC2-8E79

Site Name: Sanborn Sample

Address: 350 5th Ave.

City, ST, ZIP: New York, NY 10001

Client: Environmental Data Resources

EDR Inquiry: 7932022.1

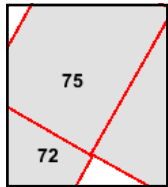
Order Date: 03/20/2025

Certification # CFCC-4BC2-8E79

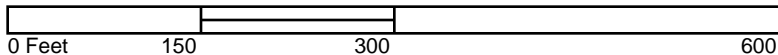
Copyright 1899

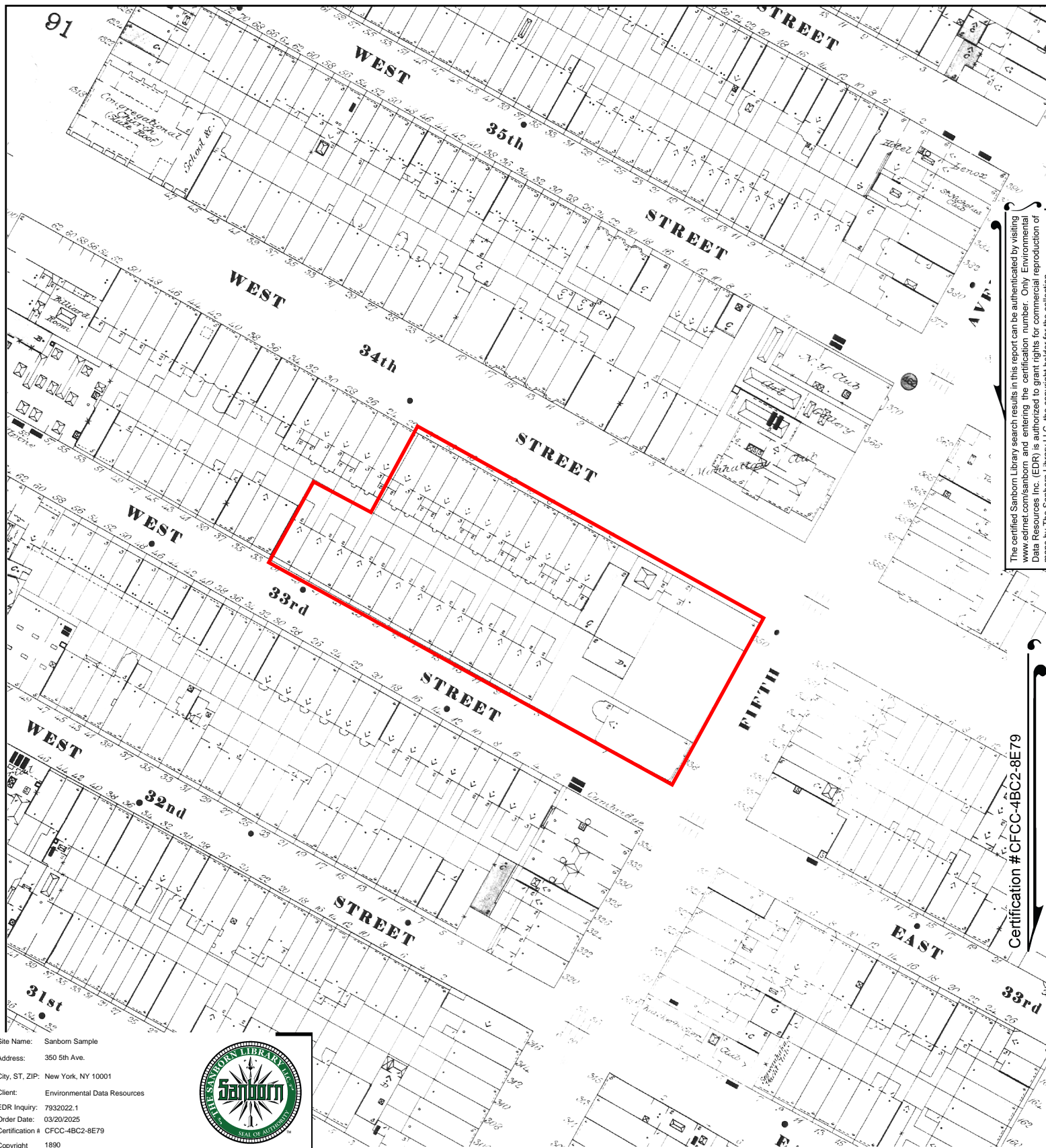


This Certified Sanborn Map combines the following sheets.  
Outlined areas indicate map sheets within the collection.



Volume 4, Sheet 72  
Volume 4, Sheet 75  
Volume 4, Sheet 75





The certified Sanborn Library search results in this report can be authenticated by visiting [www.edrnet.com/sanborn](http://www.edrnet.com/sanborn) and entering the certification number. Only Environmental Data Resources Inc. (EDR) is authorized to grant rights for commercial reproduction of maps by The Sanborn Library LLC, the copyright holder for the collection.

Certification #CFCC-4BC2-8E79

Site Name: Sanborn Sample

Address: 350 5th Ave.

City, ST, ZIP: New York, NY 10001

Client: Environmental Data Resources

EDR Inquiry: 7932022.1

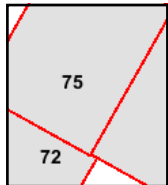
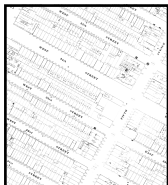
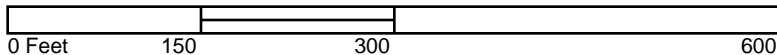
Order Date: 03/20/2025

Certification # CFCC-4BC2-8E79

Copyright 1890



This Certified Sanborn Map combines the following sheets.  
Outlined areas indicate map sheets within the collection.



Volume 4, Sheet 75  
Volume 4, Sheet 75  
Volume 4, Sheet 72

