

LightBox Live: Quick-Start Guide

LightBox Live redefines how CRE professionals access, analyze, and act on property intelligence. Our initial release transforms environmental due diligence, streamlining site assessments and reporting like never before. Bringing together a streamlined interface, new content, and powerful capabilities all in one place, this application enables you to make better-informed decisions and deliver your best work with ease.






Explore key highlights to get started:

Streamlined Design






Review environmental data with ease thanks to our sleek, modern design—built to help you find what you need faster than ever.



Streamlined Feature Summary:

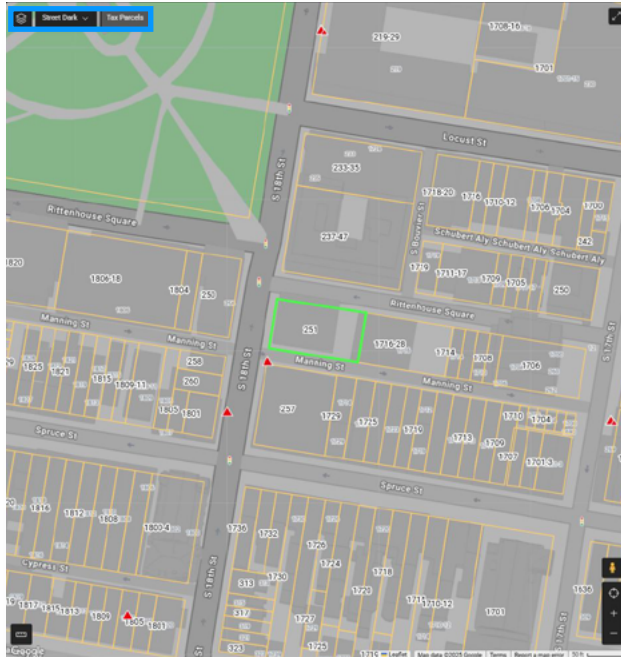
-  A New Dark Theme
-  Frozen Database Headers
-  Hide “Not Reported” Fields Toggle
-  Multiple Tables
-  Timeline

The Details:

-  Enjoy the modern, **Dark Theme** — Many users today are already working in dark themes on other applications and documents.
 -  **Frozen Database Headers** — enable you to know which database and sub-table you are currently viewing. This feature works automatically as you scroll through the data, which can be particularly helpful in longer documents.
 -  Each Text Detail Card also now includes **Hide “Not Reported” Fields** — to eliminate unimportant or redundant information from view. This toggle option (on/off) will save you time by hiding unimportant or redundant information.
 -  Open **Multiple Tables** — at the same time to see and compare different types of data, such as environmental records, assessor record lists, and water wells.
 -  The new **Timeline** — lets you see a full historical view of Sanborns, Aerials and Topo maps and compare the property uses from different sources.
- ➔ *To view your Timeline, access it under the Historical Records tab (shown above).*

Additional Content

Additional content embedded in LightBox Live enables you to better identify issues and minimize time switching between content sources, so you can more reliably advance from data to insight.



Tax Parcels

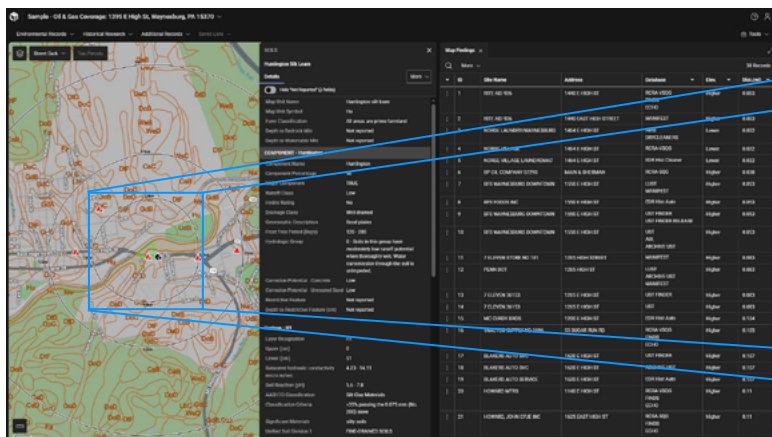
Tax Parcels on the map can be annotated with the address number, APN, and owner name to save you time.

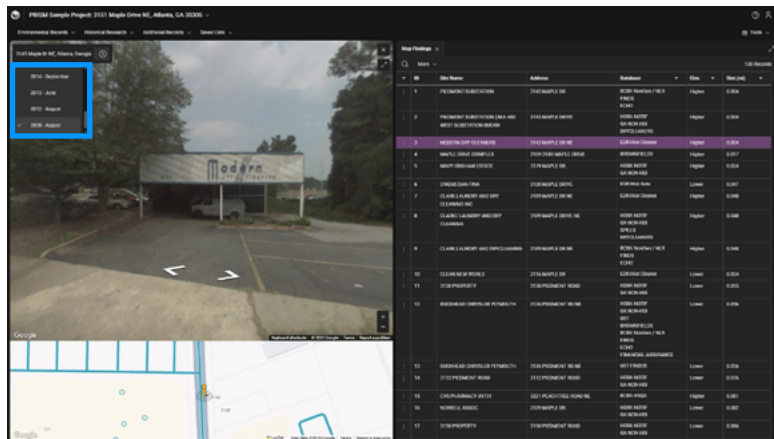
→ Look for the tax parcel button in the top left corner of the map.

Detailed assessor fields are now available by clicking on any tax parcel or through the Assessor List from the content ribbon, under Other Records.

Soil Types

Soil Types are now much easier to review in LightBox Live. The revised map presentation covers a larger geographic area, and the text detail is better organized for quicker reading. The presentation is similar to the Natural Resources Conservation Service – USDA / Web Soil Survey.





Street View

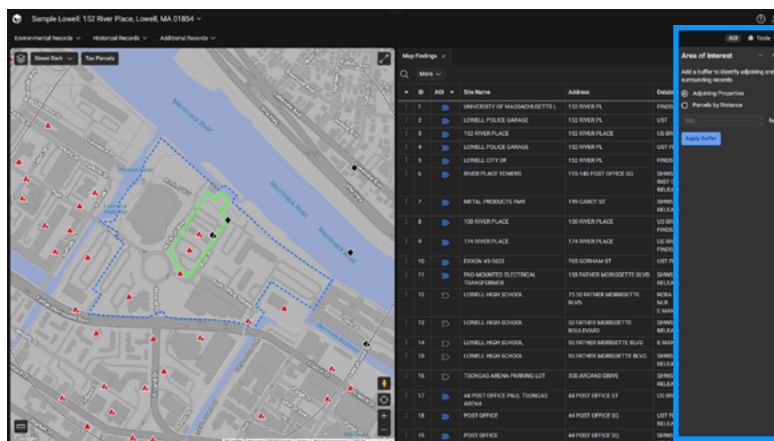
Save time and gain a better understanding of property history with historical **Street View**. Coverage goes back to 2007 (where available).

→ Easily toggle between years to change your map view.

Stay tuned for City Directory data, coming soon!

New Tools

Cutting edge 'adjoining research' and measuring tools make it easier than ever to accomplish your goals quickly and accurately.



Area of Interest Tool

The **Area of Interest (AOI) Tool** is the first mapped-based technological solution to help identify adjoining properties per the adjoining property language in ASTM 1527-21. Using LightBox Data of tax parcels, building footprints and ownership information, along with street networks, the AOI Tool displays the boundary of the adjoining properties and flags environmental records within the area.

→ To begin using the AOI Tool, click the **Tools** menu in the top right corner of LightBox Live.

About LightBox

At LightBox, we are at the forefront of delivering advanced and precise solutions for commercial real estate intelligence. Our dedication to innovation propels real estate professionals forward by providing them with the essential tools required to navigate complex decisions, minimize risk, and boost productivity across the spectrum of real estate operations. To discover more about how LightBox can illuminate the path to informed real estate solutions, visit us at: www.LightBoxRE.com

Check out our resource center for more updates and support material: [LightBox Live Resource Center](#)

LIGHTBOX

LOCATE. ANALYZE. ACT.

© 2025 LightBox Holdings, L.P.

LightBox Live (ENV) Quick-Start | 05-25